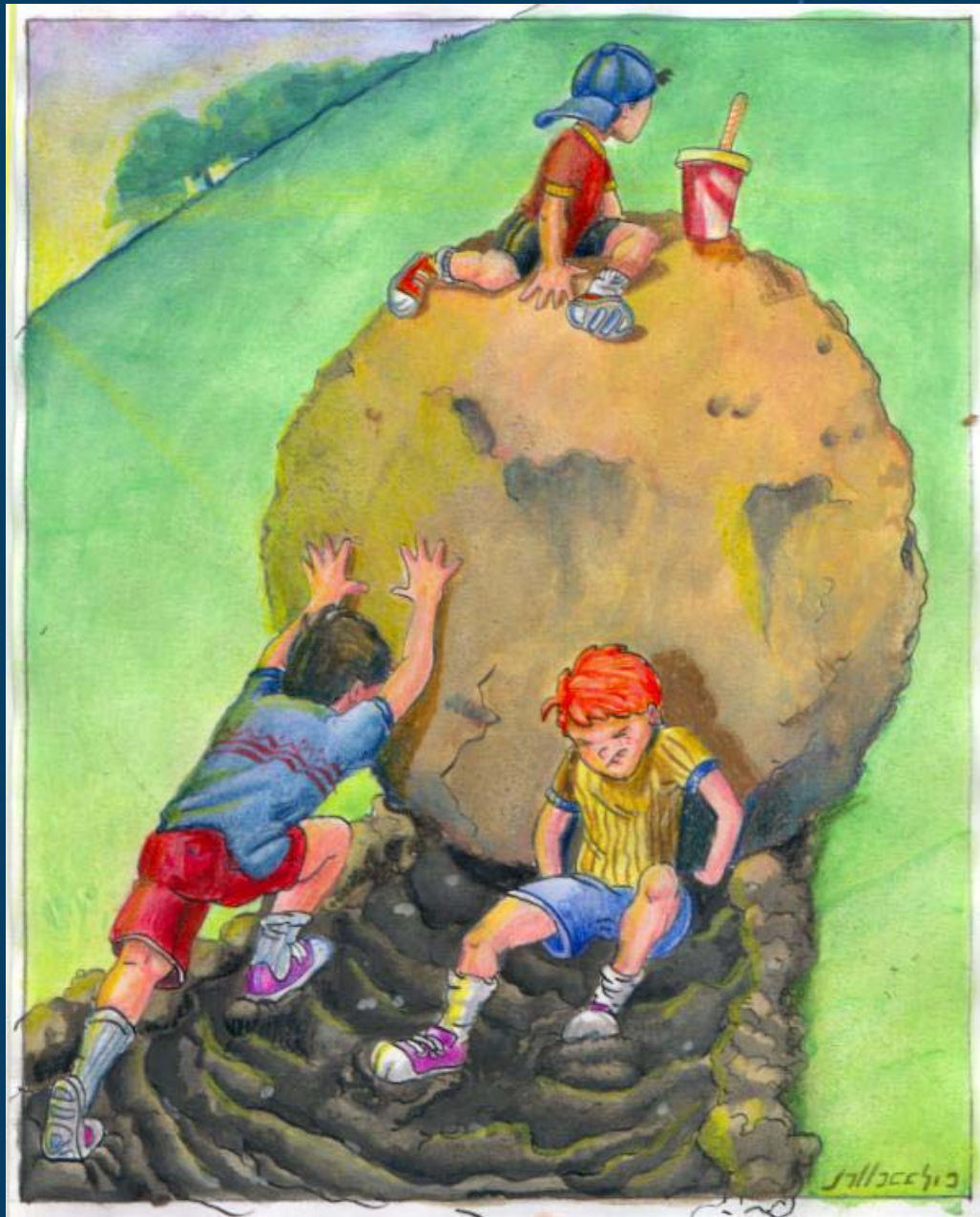
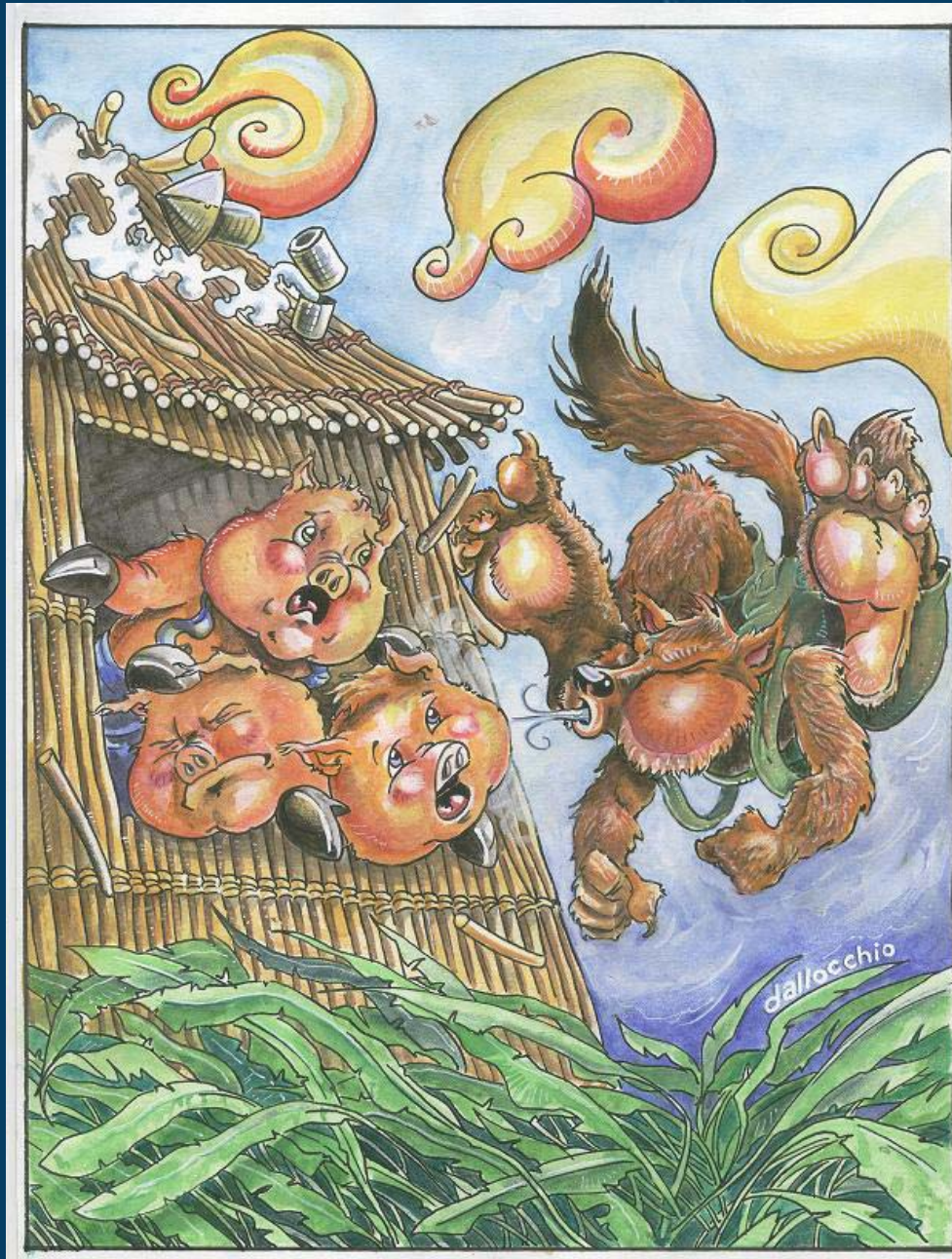
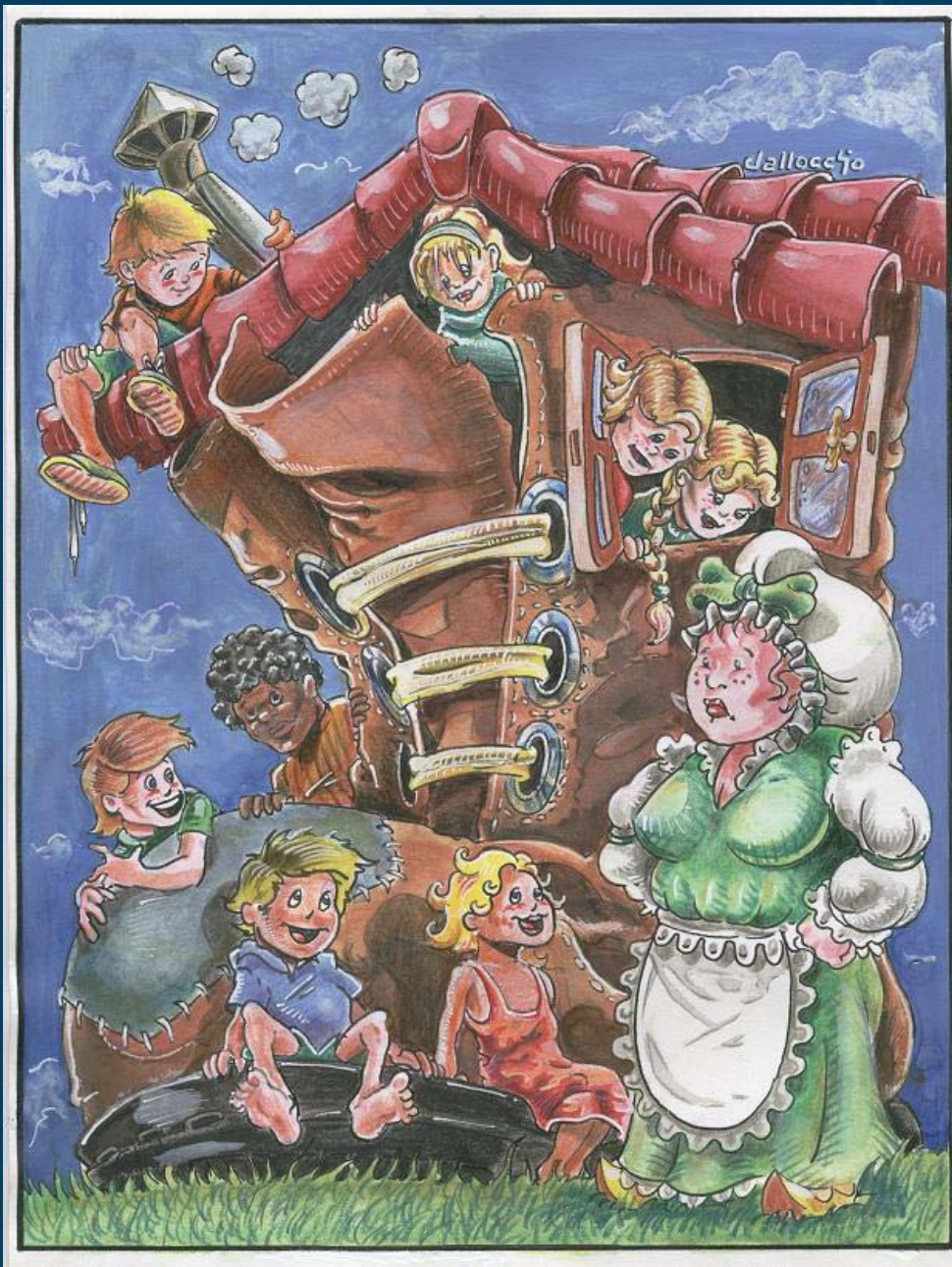
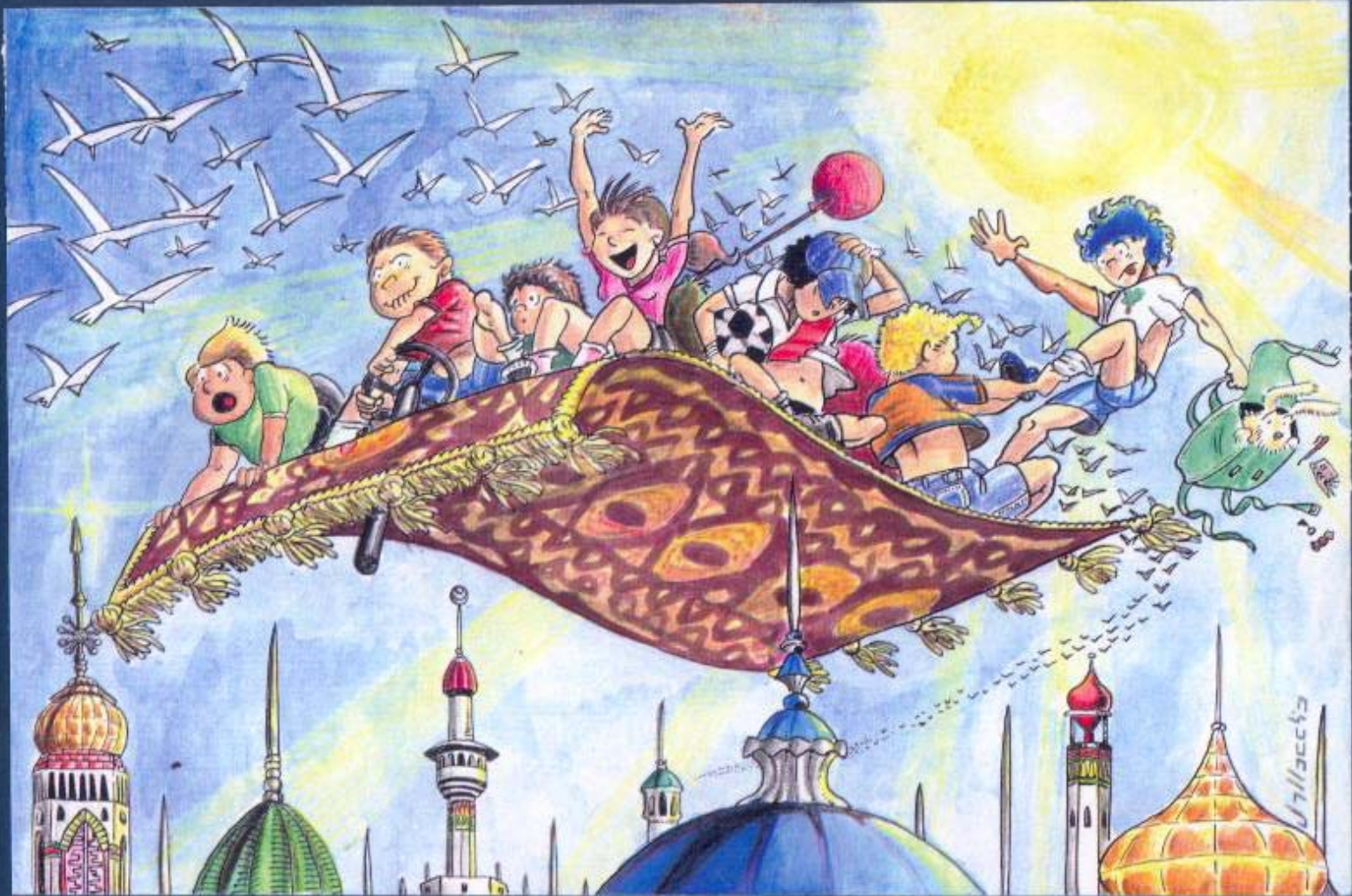


The Gestalt of METIS®











*Metis is not
an EA tool.....*





Metis is a toolkit for making tools

creating models with the tools



And using the resulting models

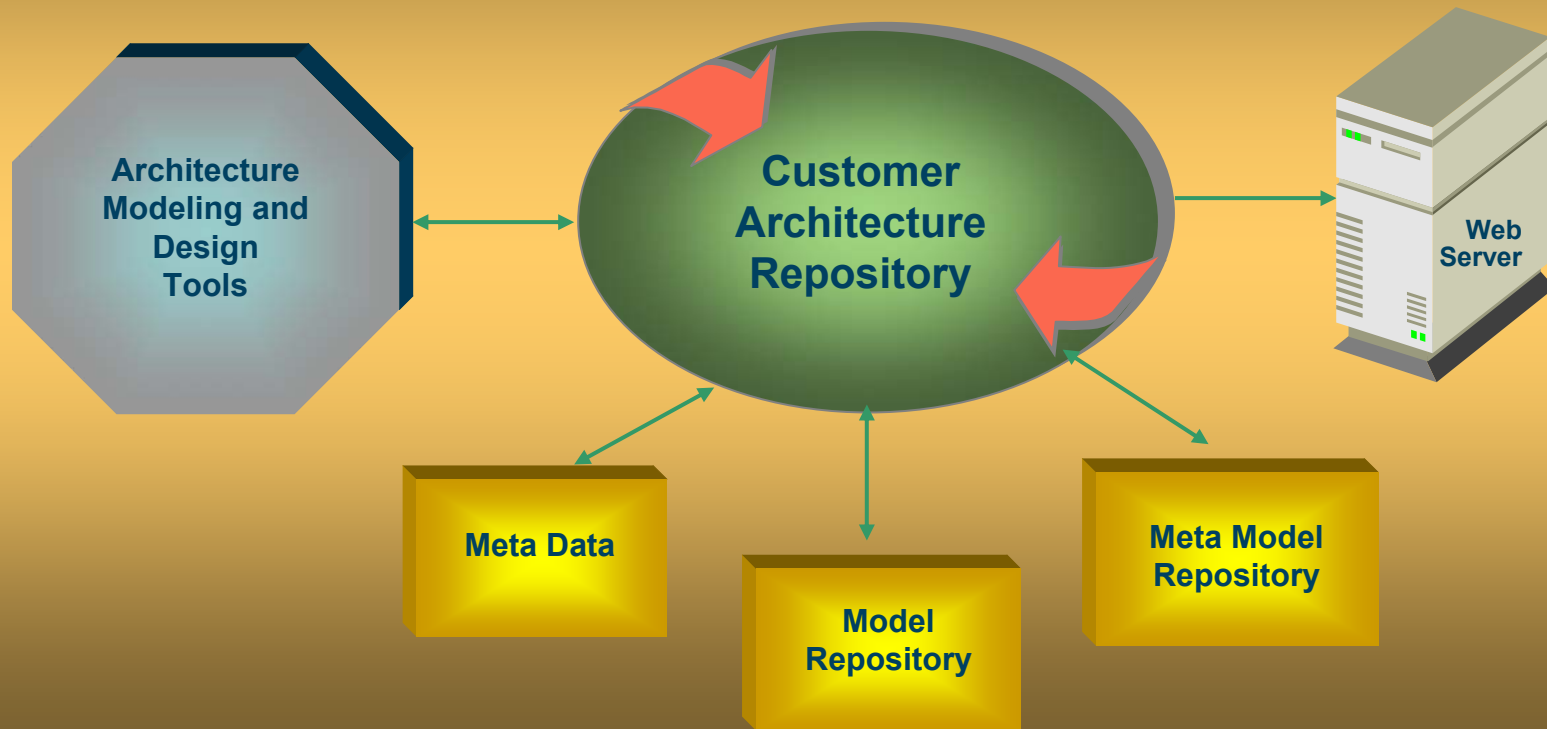


Metis has been applied to:

- Enterprise Architecture planning & management
- Applications portfolio management
- Business process deployment
- Business objectives & IT projects alignment
- CRM business impact planning
- eBusiness visual solution planning
- Data warehouse assessment and architecture
- Configuration management
- Project planning and management
- Requirements traceability
- Supply chain analysis
- Intranet portal



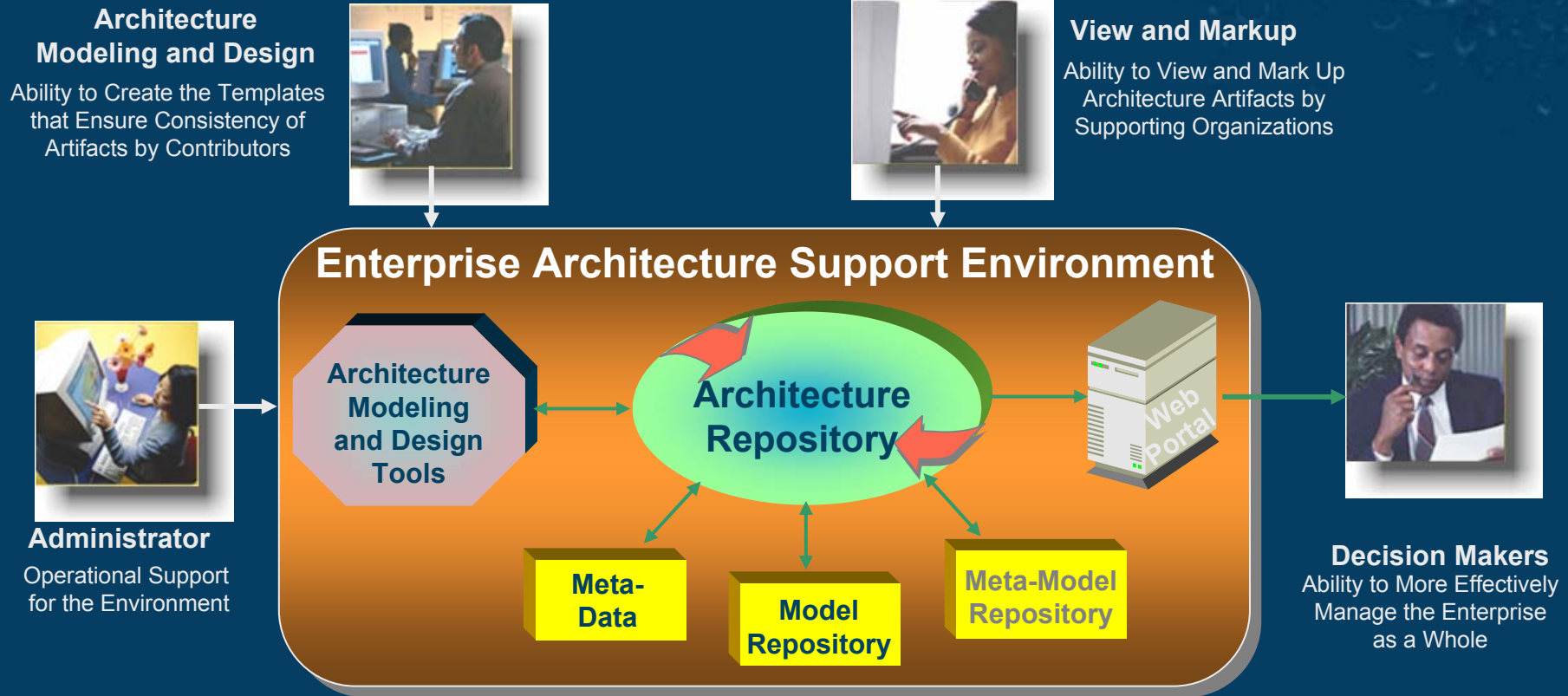
Basic Elements of Metis



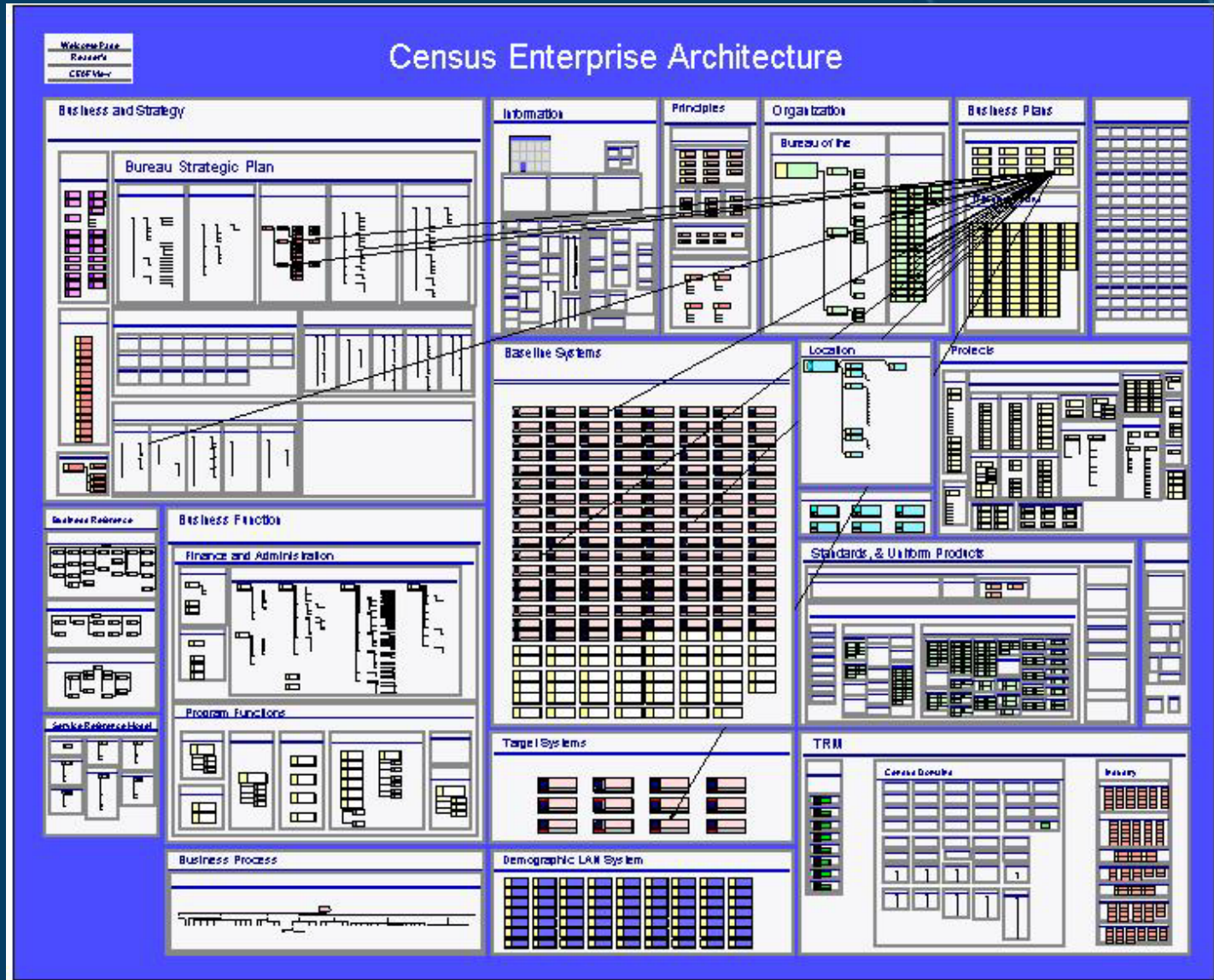


Role-based tools

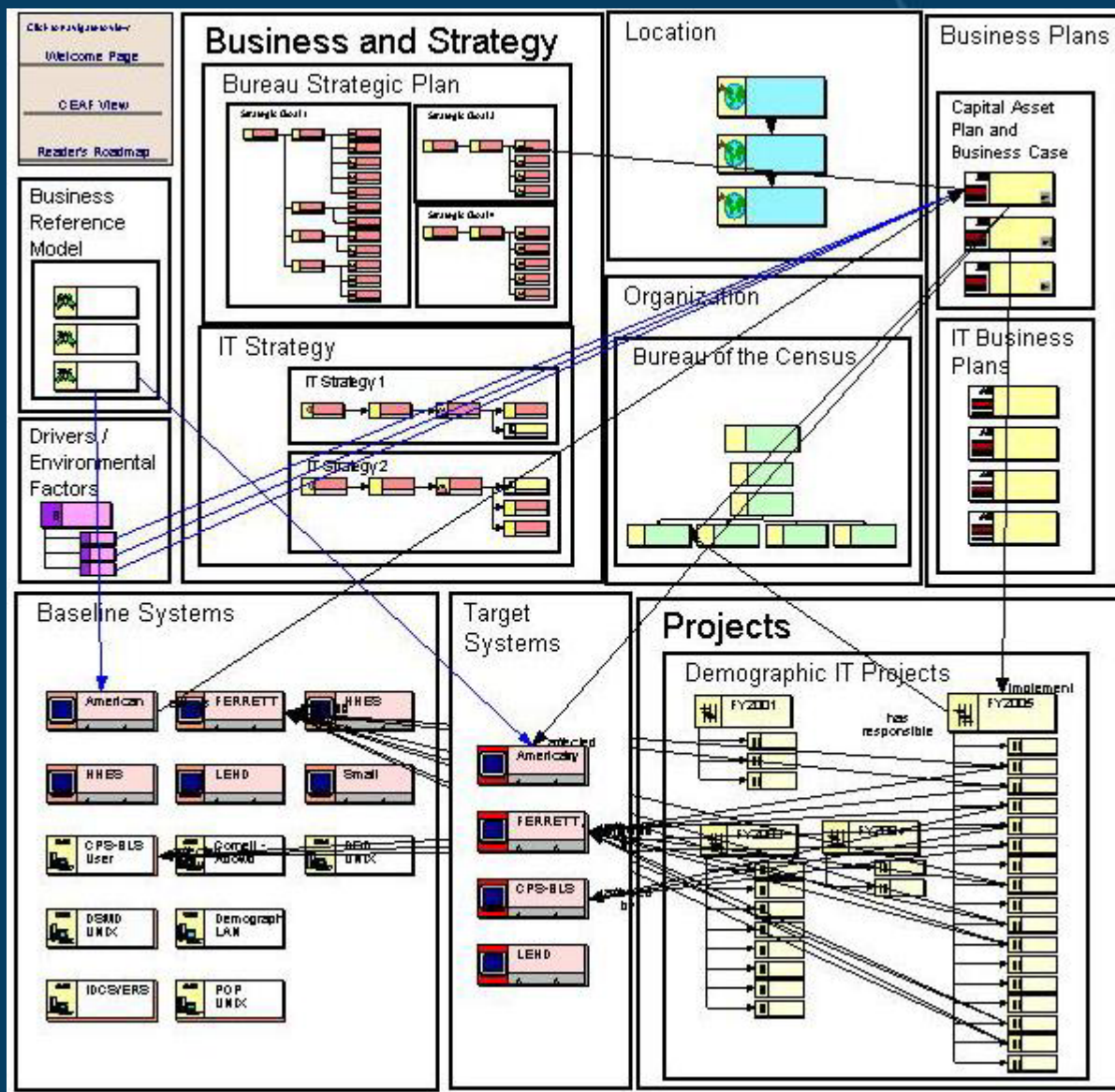
Providing an environment to manage and use the “blueprint.”



Holistic Models – top to bottom

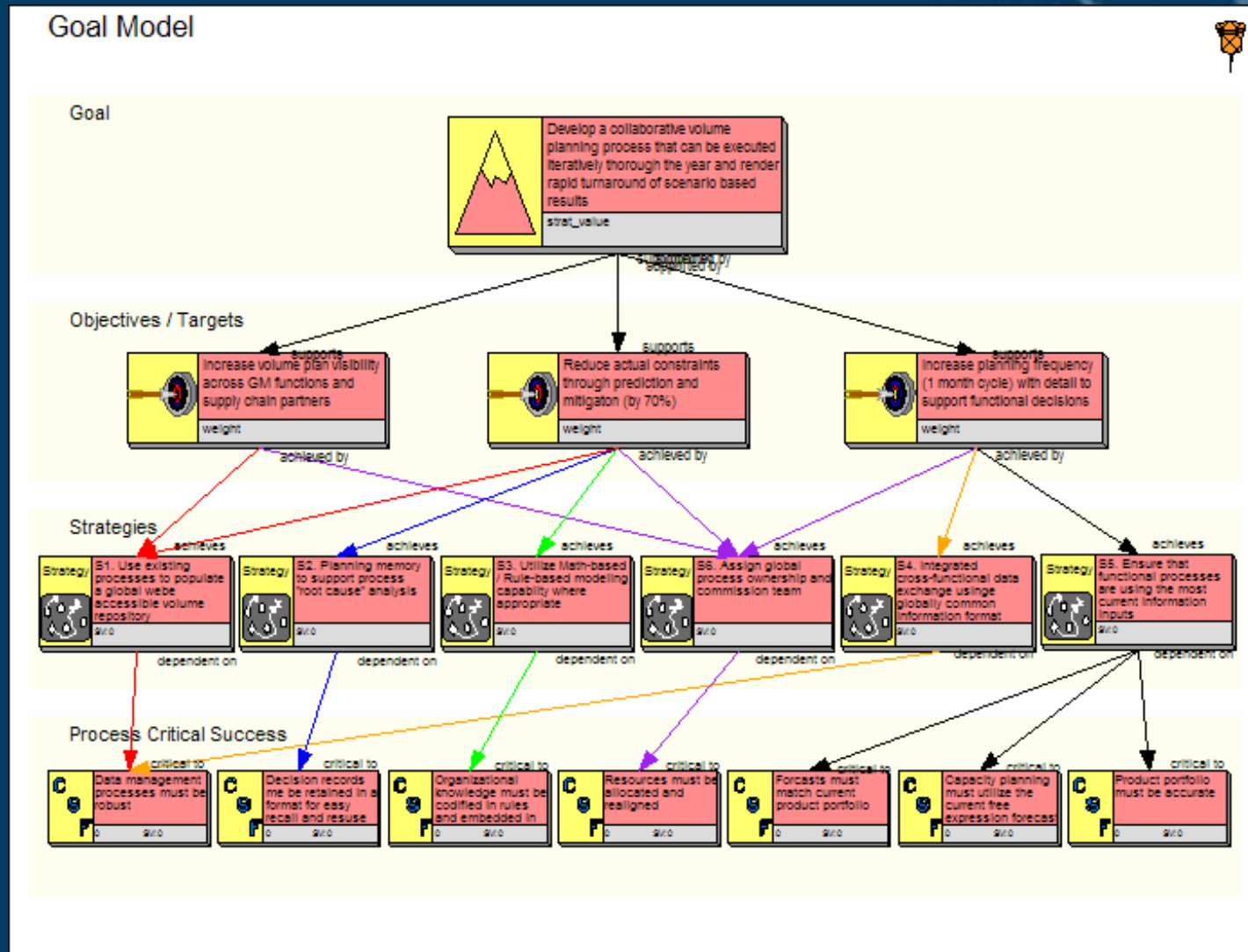


Generate Any Views Needed



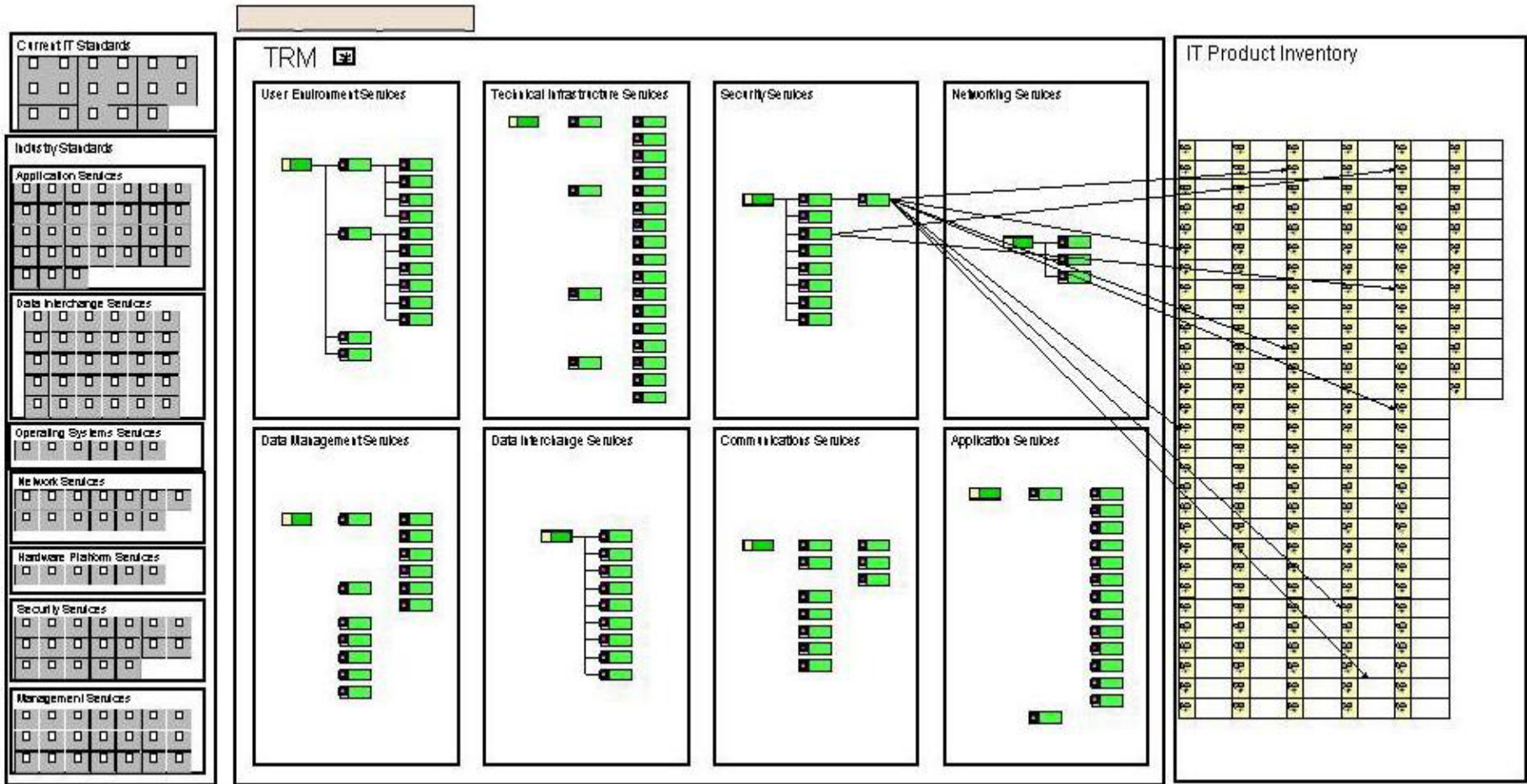


Perform analysis to provide answers





Incorporate Reference Models



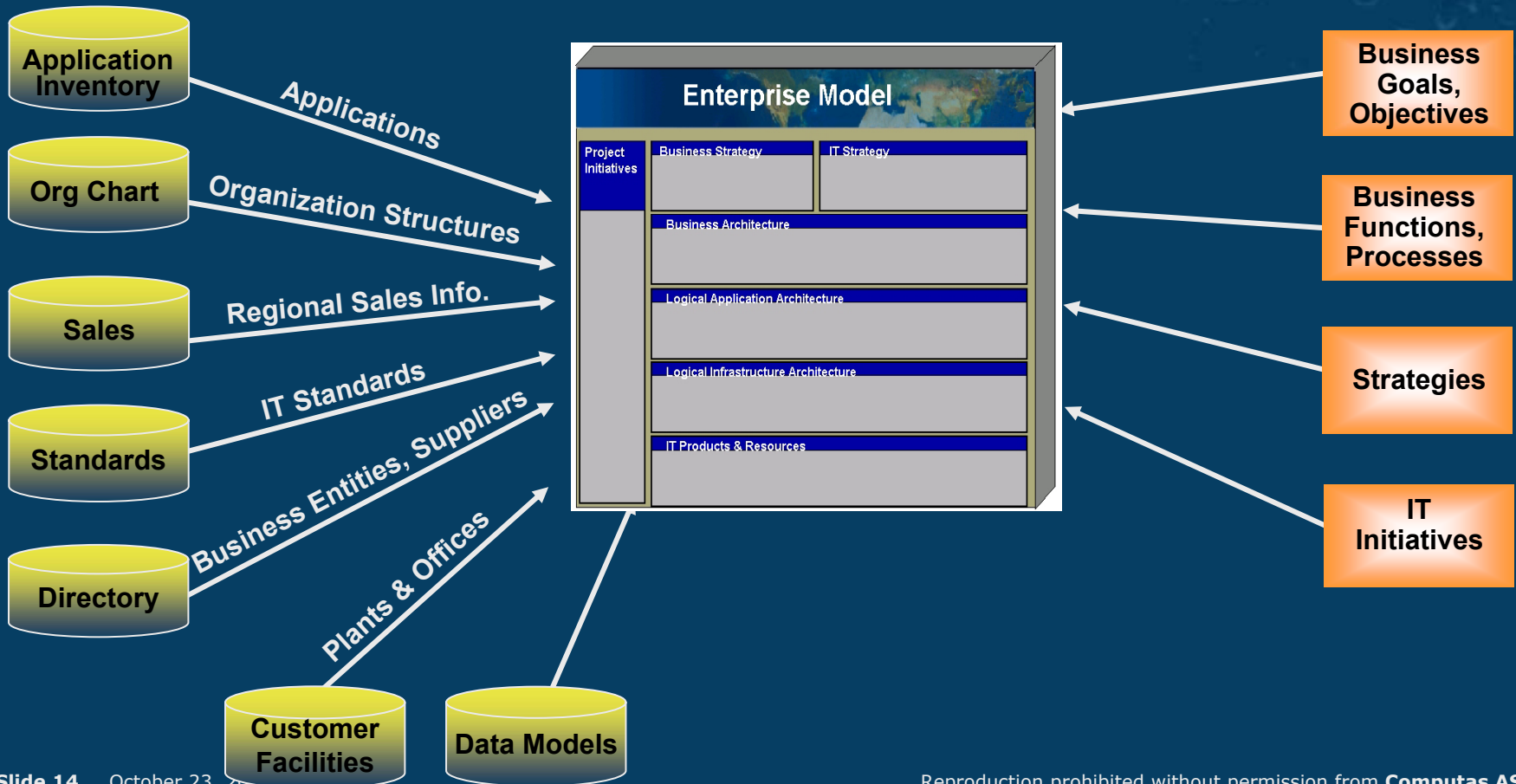
Automate Capture/Update of Enterprise Architecture Data



Automatic Sources



Manual Sources

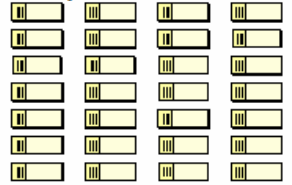




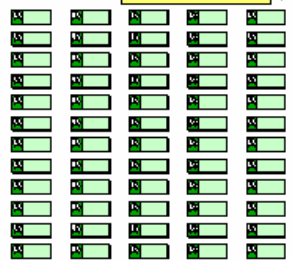
Transition Strategy

IT Planning

IT Projects



Releases



Online Documentation



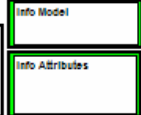
Business Strategy

Strategic IT Considerations

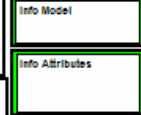
Business Operation



AS-IS



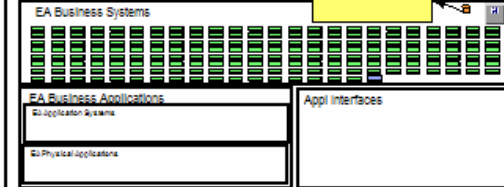
TO-BE



AS-IS Applications



TO-BE Applications



As-Is IT Infrastructure

To-Be IT Infrastructure

IT Products & Resources


Include as-is and to-be elements



Design an interface that works for the users

QMS Model Navigation

- START HERE - Instructions ▶
- QMS Model Information ▶
- Regulatory View ▶
- Management View ▶
- Tulsa Highlight Example ▶



Airplane Programs ▶	PSD ▶
Long Beach ▶	SM&P ▶
WRC ▶	Tulsa ▶
BAS/CAS ▶	Wichita ▶
FAB/AS&I ▶	TBD - Additions as Needed ▶



- **Communicate**
- **Understand**
- **Get buy-in**
- **Operationalize**