

LOCKHEED MARTIN



**ARQuest™**  **Blueprint**

*The Open Group*  
**Architecture Practitioners  
Conference**

**Ron Crawford**

ron.crawford@lmco.com

**ARQuest™ Blueprint Product Manager**

**Lockheed Martin Mission Systems**

**23 October 2003**



® CMM and Capability Maturity Model are registered in the U.S. Patent and Trademark Office

# Agenda

---

---

- **Solution Background**
- **Solution Strategy, Approach and Alignment**
- **Tools Overview**
- **Process & Tools Alignment**

A large, stylized graphic of the ARQuest logo, featuring a central black oval with four blue lines extending outwards to form a star-like shape. The lines are of varying lengths and angles, creating a dynamic, multi-pointed star effect. The graphic is positioned to the right of the main text and partially overlaps the bottom of the list.

- **Architecture Foundational Relationships**



# ARQuest™ Blueprint Overview

## Triple A-COM Model:

1. Architecture,
2. Analysis, and
3. Alignment.

## **For Enterprise IT resource:**

- ✓ Consolidation, Optimization, and Modernization.

An Enterprise Architecture is **more than pretty pictures** of different views, it needs to be **analyzable** to determine:

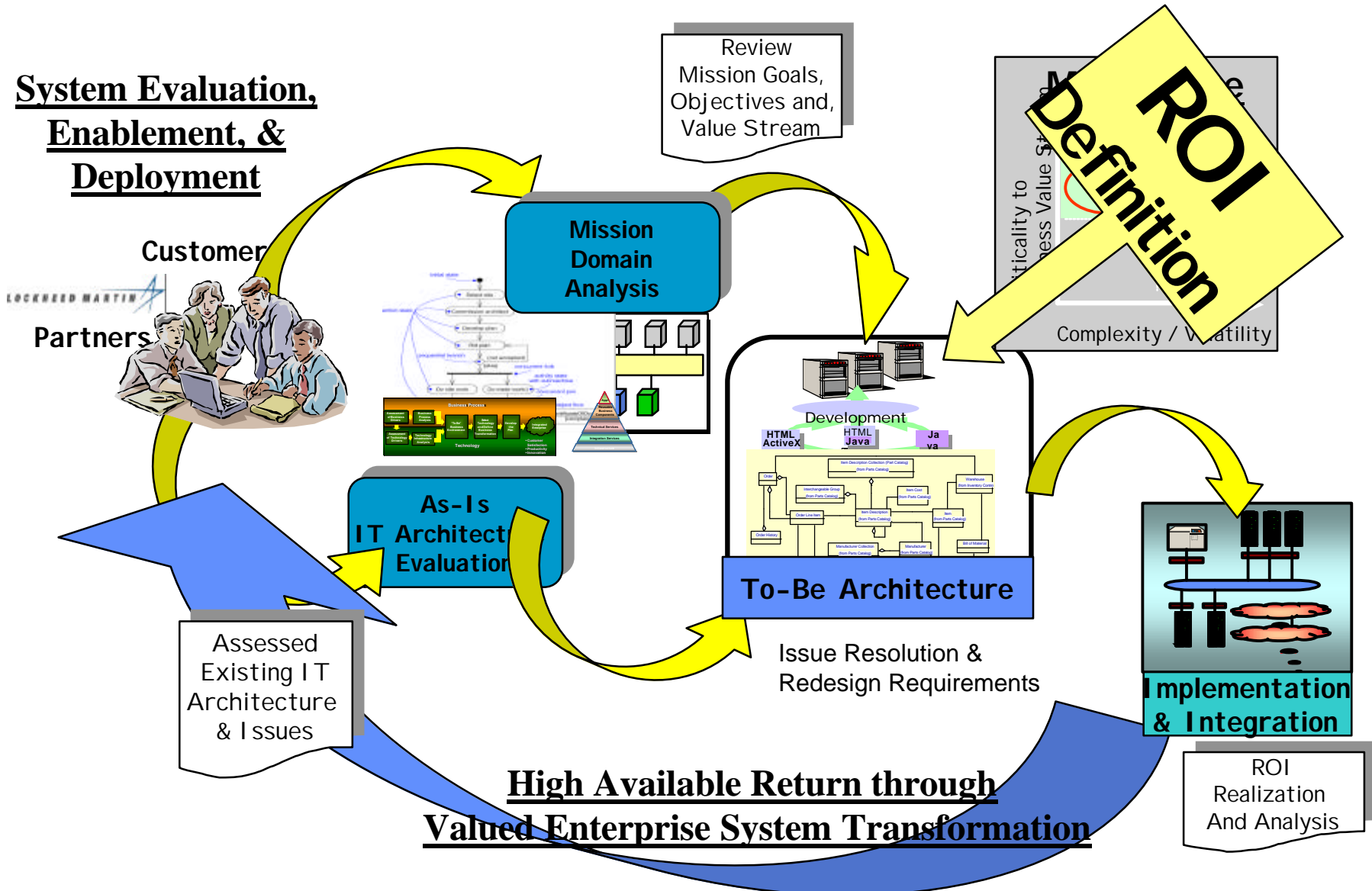
- 1) how the **IT resources support/align with the mission,**
- 2) how the **processes support/align with the mission,** and
- 3) how the **IT resources/align with the processes.**

**4) How to justify/prioritize IT project budgets.**

- **Enterprise Architecture Approach**
  - Holistic, Framework Independent, Open, Integrated & Extensible
  - Align Business Strategies and Technology Implementations
  - Federal, LM Internal & Commercial Utilization
  
- **Multiple Entry Points Meeting Customer's Needs**
  - Value and Business Focused Gateway: Top-Down
  - Process Focused Gateway: Alignment to Business & Technology
  - Technology Focused Gateway: Bottom-Up
  - Horizontal and Vertical Implementations
  
- **Standards Based and Model Driven**
  - Frameworks: TOGAF, Zachman, ITAF, C4ISR,.....DoDAF
  - Process, System, Technology & Data Modeling
  - Extensive Automation & Analysis Features
  - Lean Six Sigma Process Optimization: Quality, Cost & Schedule

# ARQuest™ Solution Approach

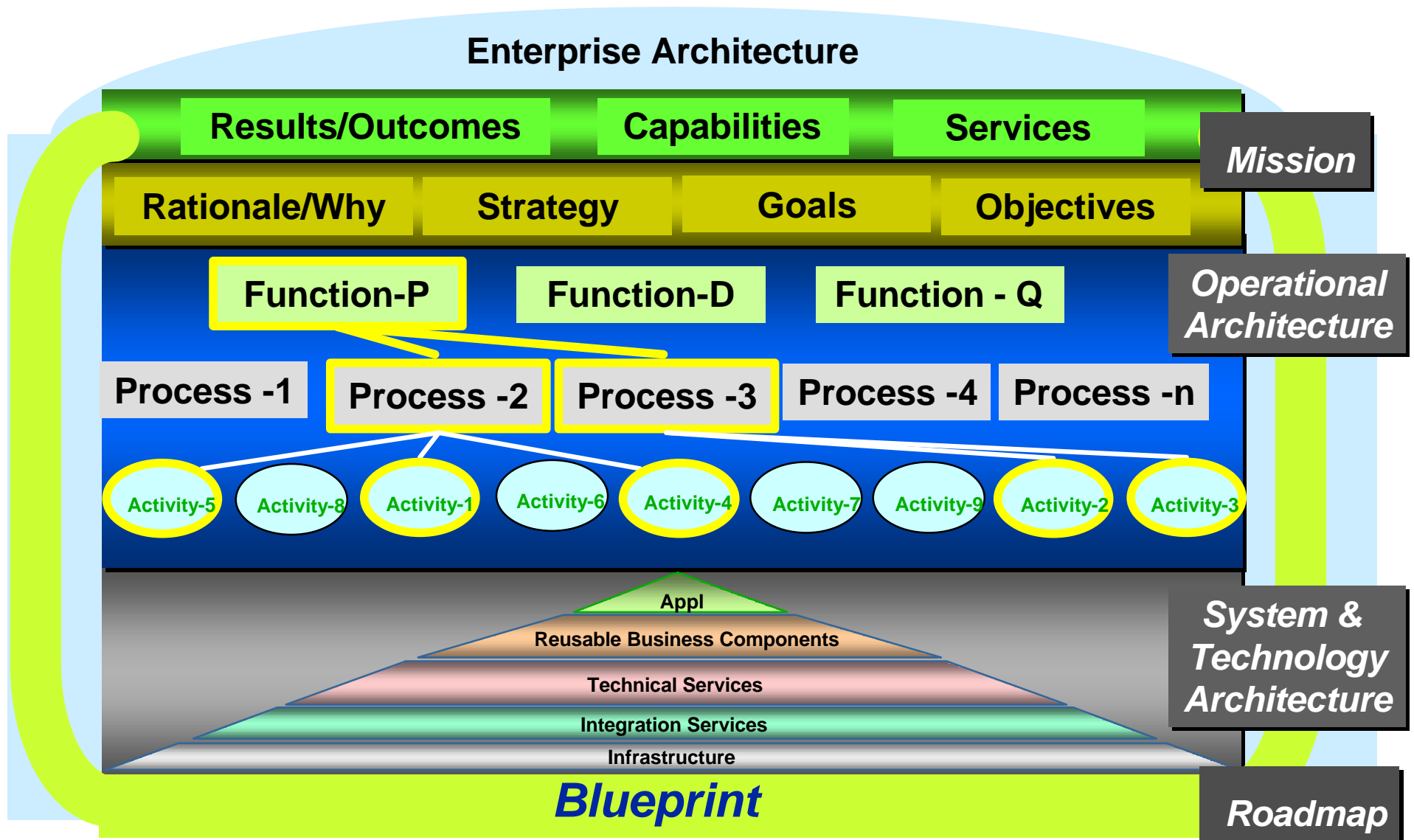
## System Evaluation, Enablement, & Deployment



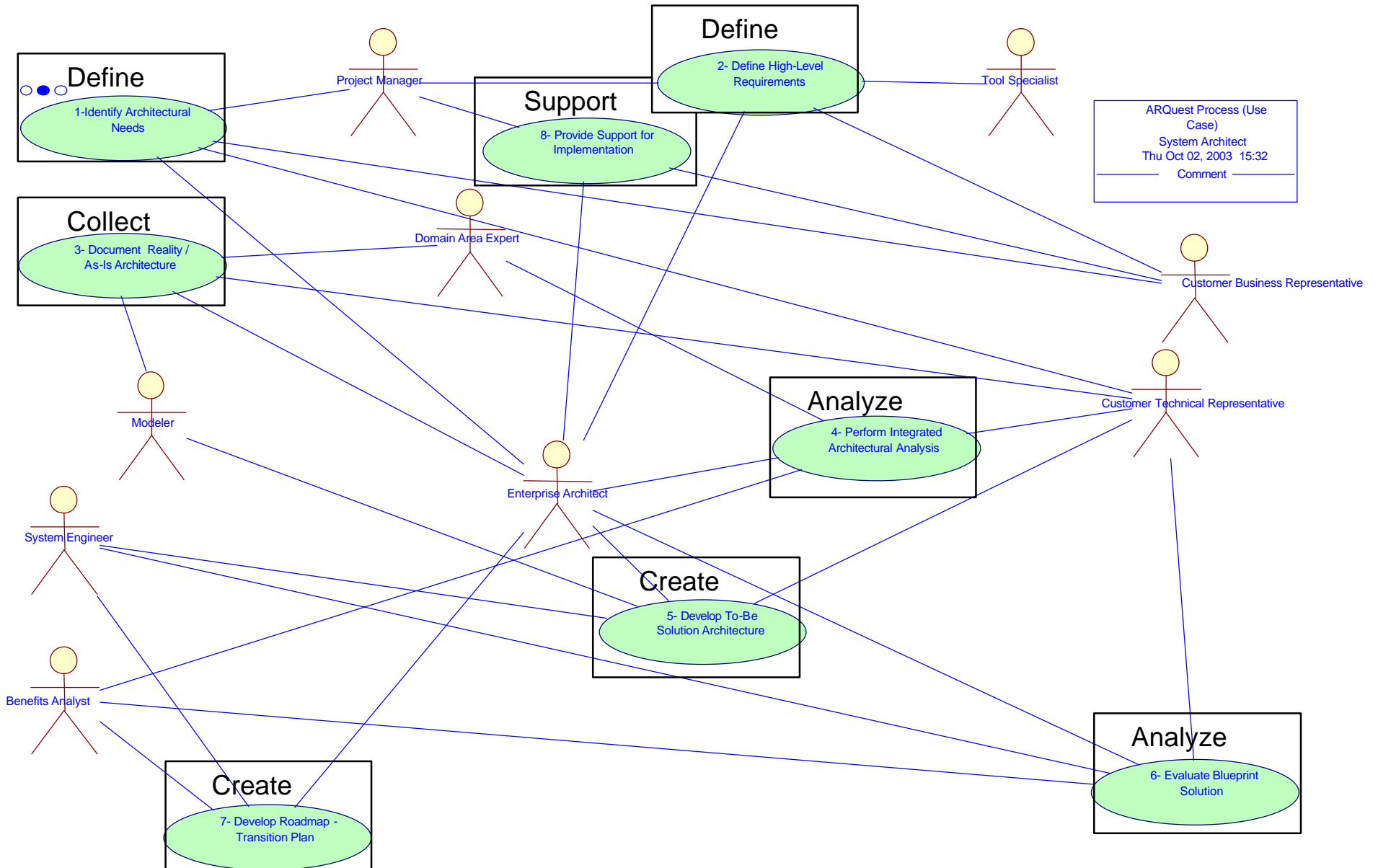




# ARQuest™ Solution Alignment

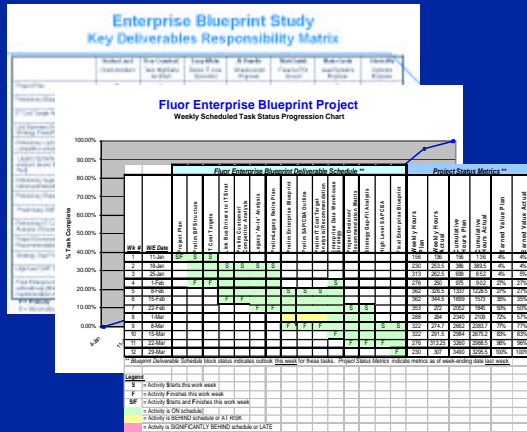


# ARQuest™ Use Case





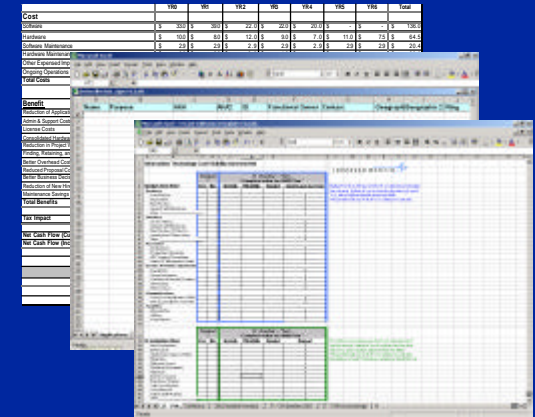
# ARQuest™ Define & Collect Tools



Project Management Workbook & Startup



Tools Requirements Document Template



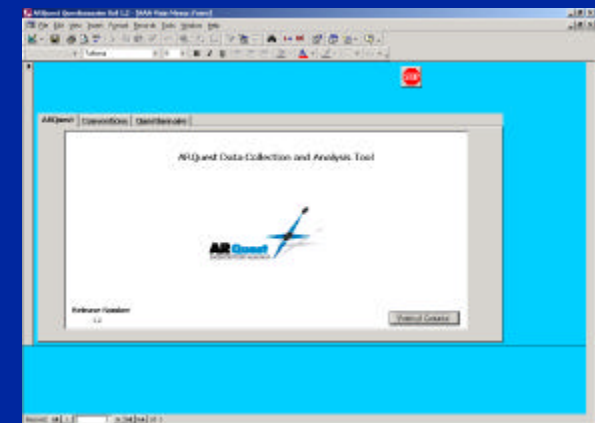
Architecture Data Collection Templates



Customizable Training Modules

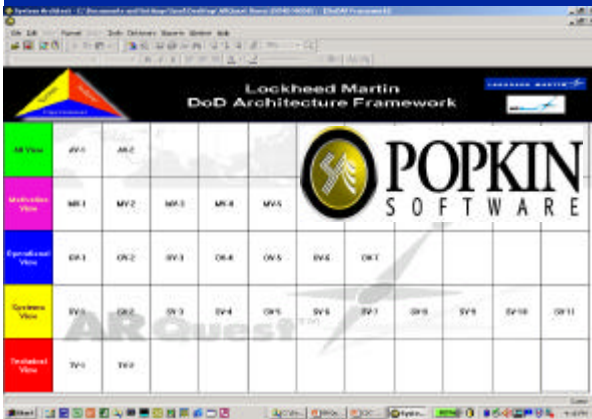


Enterprise Architecture Repository

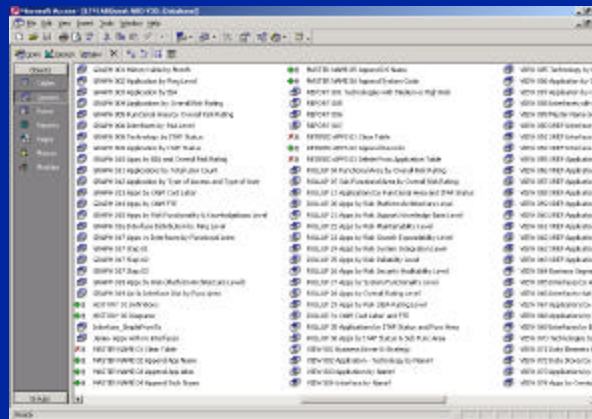


Data Collection / Cleansing Database

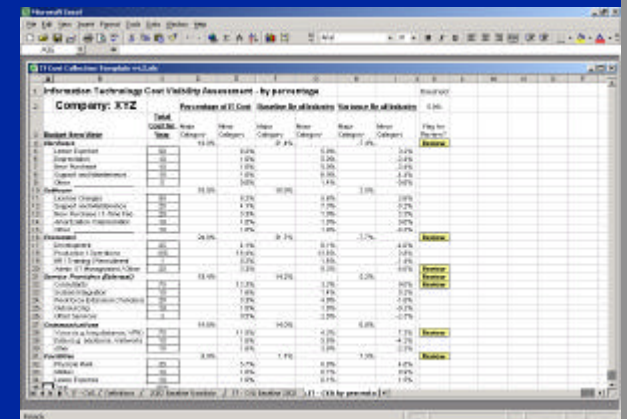
# ARQuest™ Analyze & Create Tools



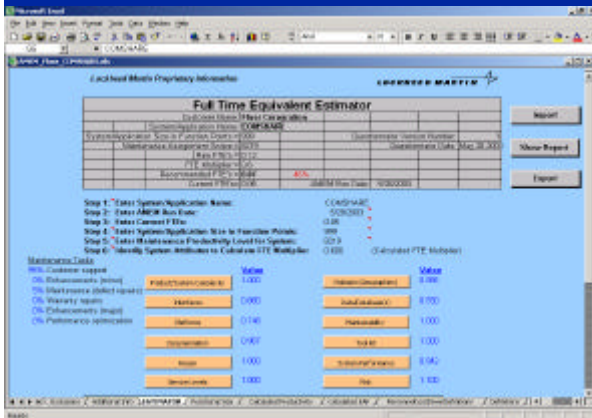
Popkin SA & Enhancements



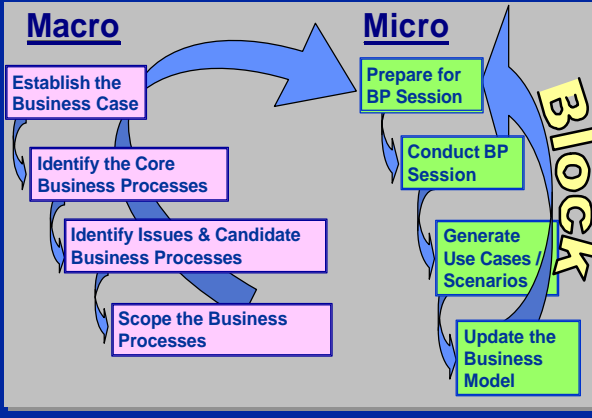
Architecture Analysis Reporting Database



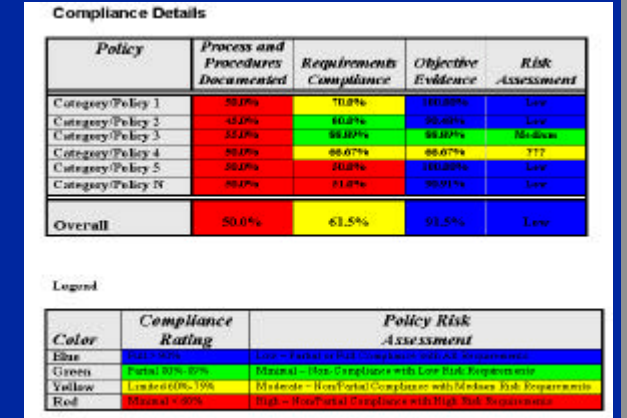
IT Cost Benchmark Database



Application Maintenance Estimating Model

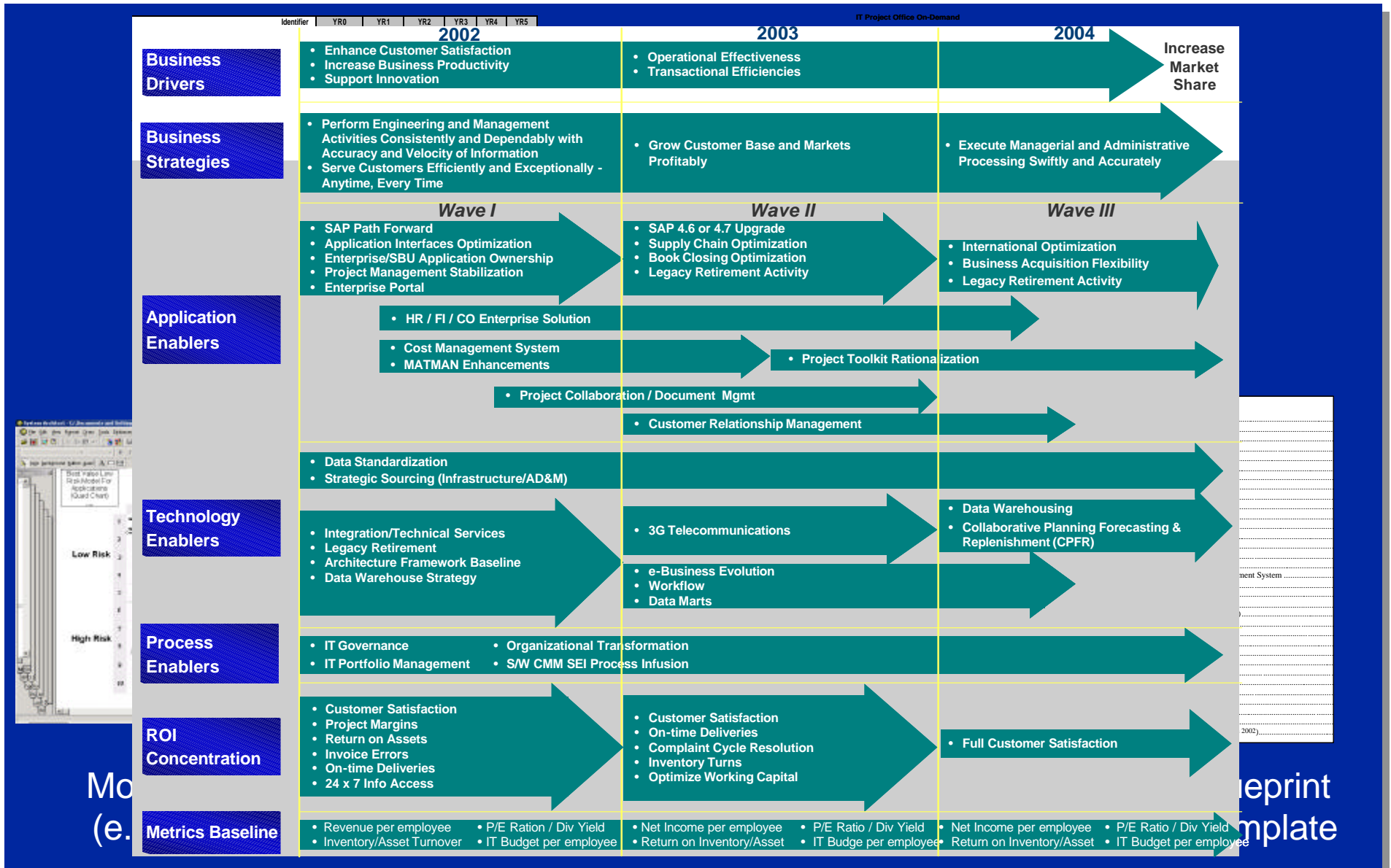


Business Process Optimization



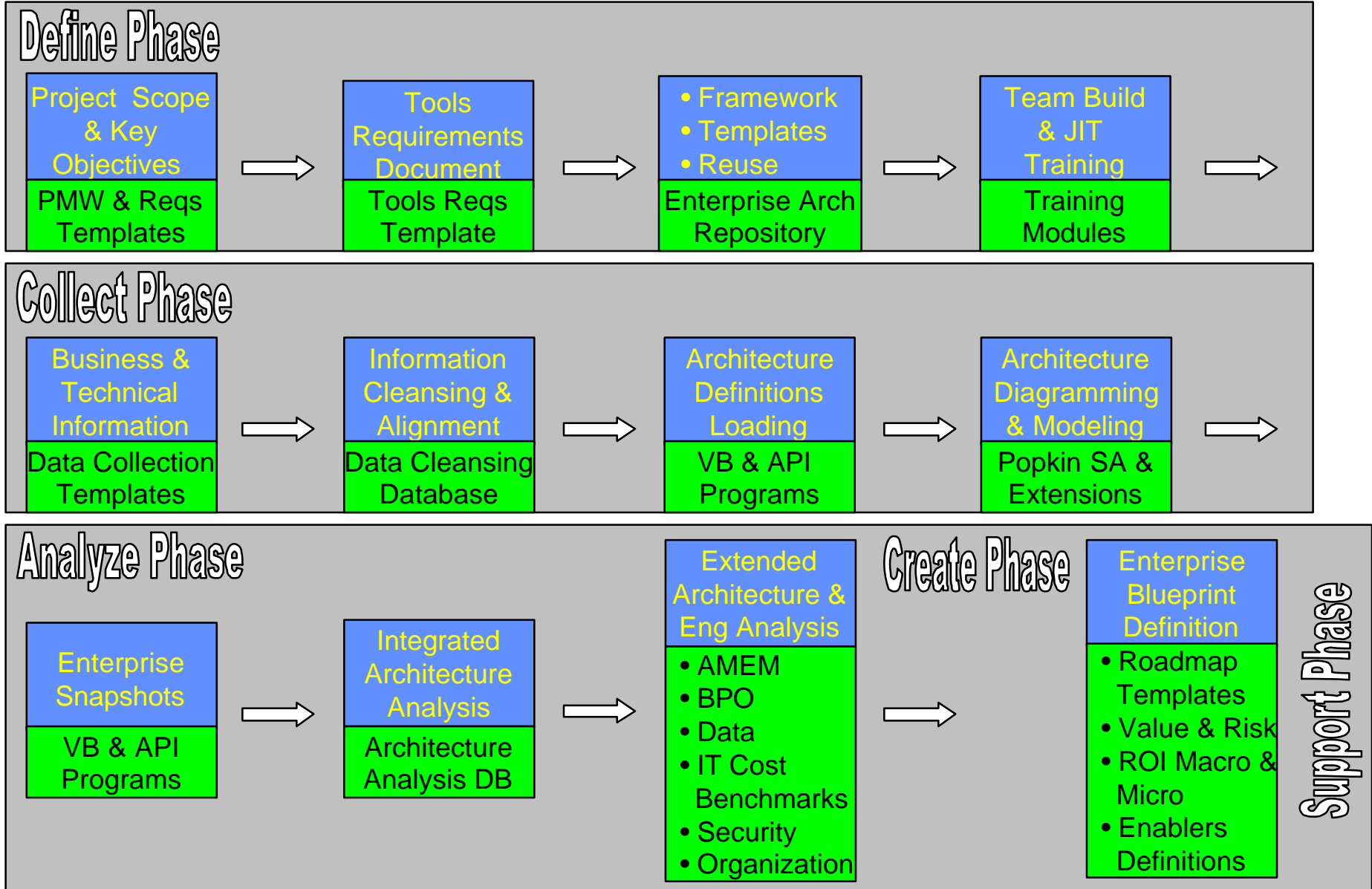
Security Assessment

# ARQuest™ Analyze & Create Tools





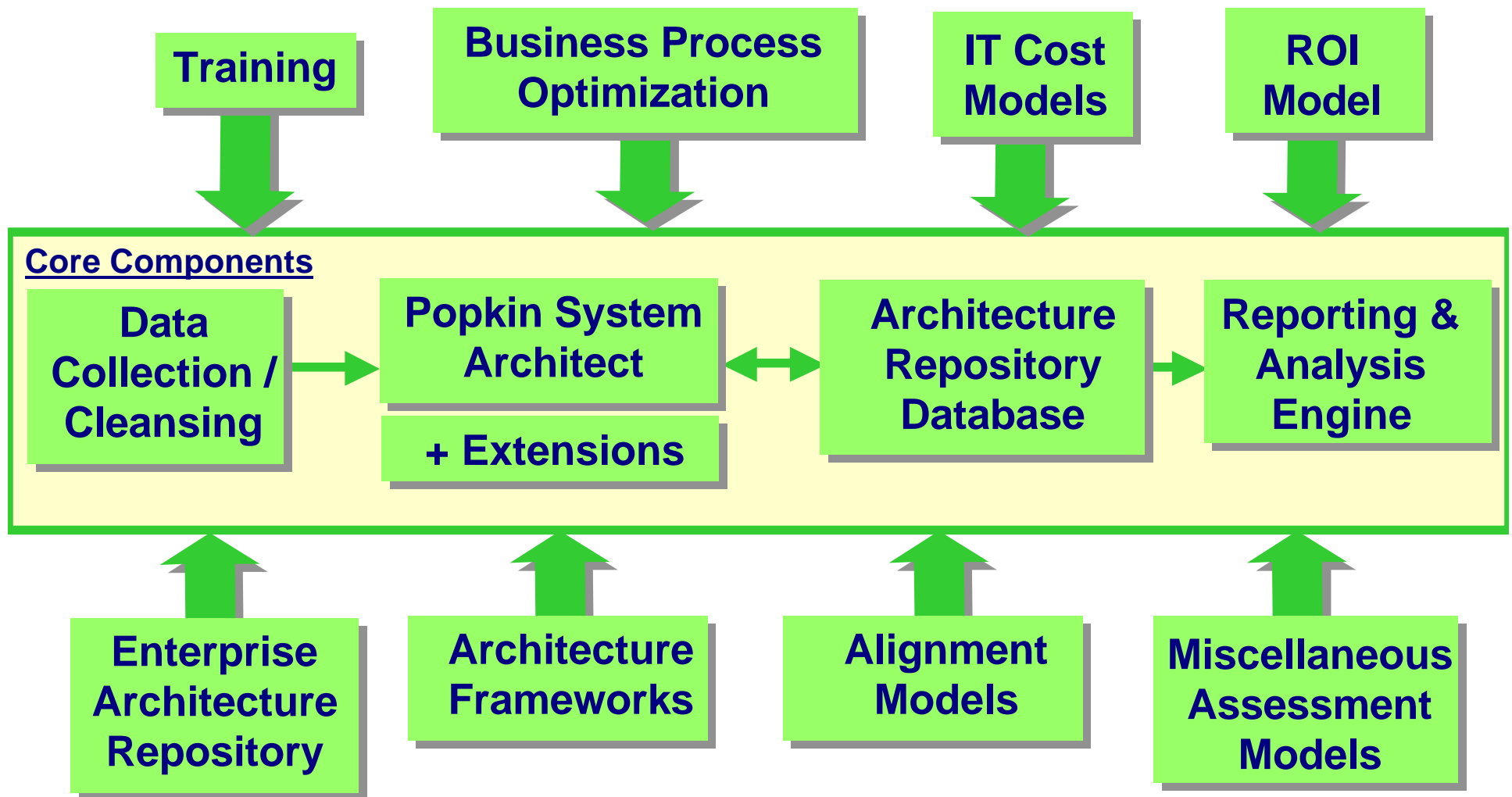
# Key Activities & Tools Alignment



# Tools Architecture



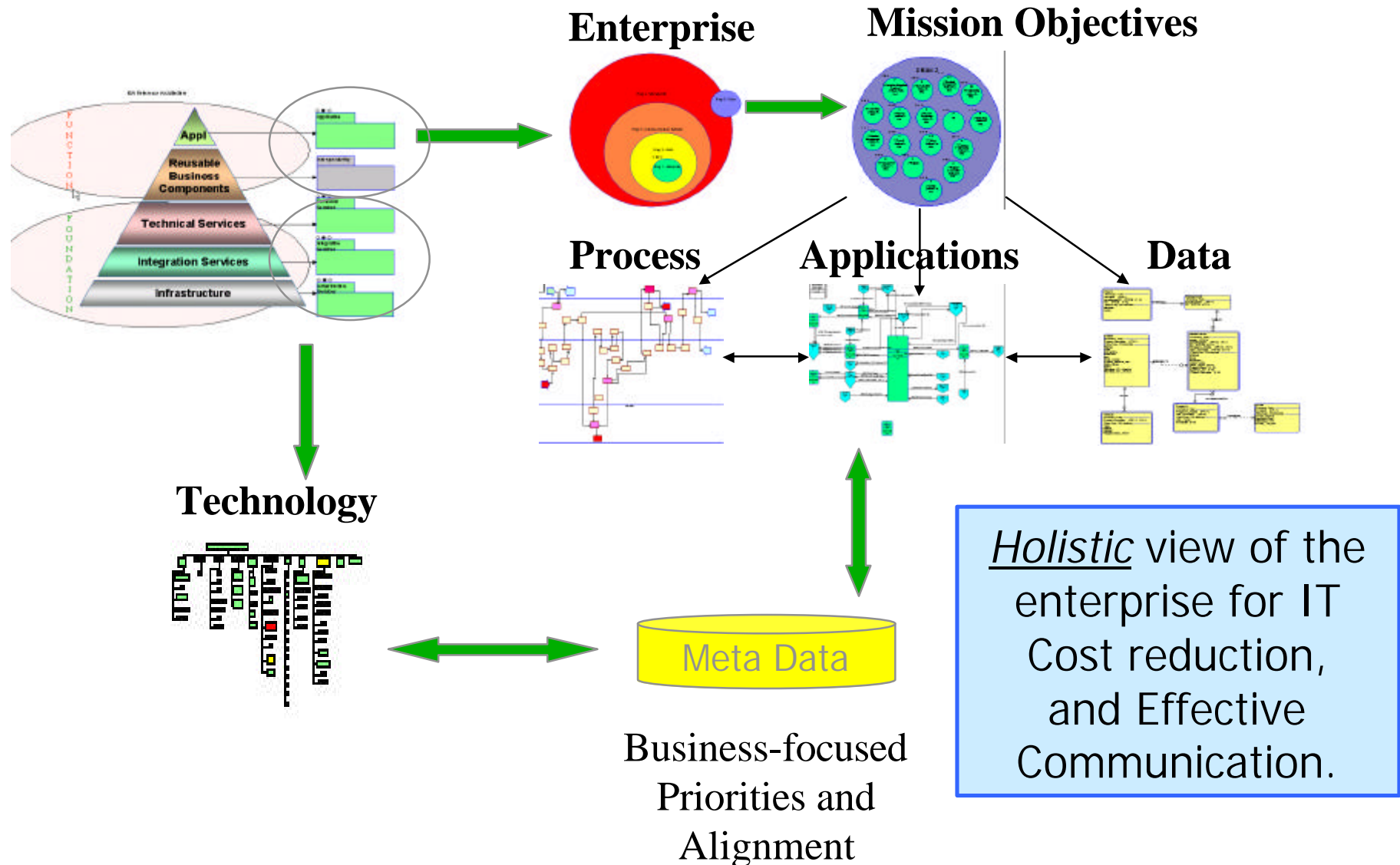
## Key ARQuest™ Tool Components:







# Integrated Architecture Relationships





# ARQuest™ Offering Levels

---

## Bronze

- ✓ Customized, standards-based **architecture framework model**
- ✓ Legacy applications and **interface analysis**
- ✓ Integrated architectural **risk assessment**

## Silver (Bronze Plus)

- ✓ Multi-phase **Roadmap** including:
  - **Application** enablers,
  - **Technical** enablers, and
  - **Process** enablers.

## Gold (Silver Plus)

- ✓ Customer, competitor and IT analysis
- ✓ **Return on Investment** model
- ✓ **IT cost benchmark** model

## Scope Variables:

- Company profile
- Business challenges
- # of Applications
- # of sites
- International vs. domestic
- IT budget
- Architecture portfolio





## ARQuest™ Blueprint:

- ✓ Is a **process** for developing an Enterprise Architecture (EA) **Blueprint Roadmap/Transition Plan**.
- ✓ Is a **product** with deliverables and training.
- ✓ Is an **Analytical Framework** for analyzing EA artifacts (e.g., views) with:
  - ❖ Patent-Pending **tools/processes**,
  - ❖ An open and extensible **meta-data model**,
  - ❖ Having **Horizontal Integration** focus.
- ✓ Is based on over a **decade of EA experience** and commercial **leading/best practices**.
- ✓ Is being used for commercial, internal and Federal projects.
- ✓ Will become part of the LM IS&S Horizontal Integration Tools Portfolio