

**Tales from a TOGAF practitioner in Australasia
(EA frameworks in real life)
Architecture Practitioners' conference
April 2004**

VISH VISWANATHAN

Managing Principal- CCANDC Solutions

Regional Partner- The Open Group (Australia/New Zealand/ASEAN)

Vice Chair-Asia/Pacific, Architecture Forum



Commercial -in -confidence

Do we really need a Framework.....

❖ To provide a consistent communication mechanism

- Use of common vocabulary -taxonomy
- Use of a standard EA image

❖ To shorten the EA development cycle

- Assist in collaborative creation processes
- Get head start with a foundation architecture
- Reuse of solution images, templates, checklists and patterns
- Get useful links and references to best practices

❖ To ensure ease of EA maintenance

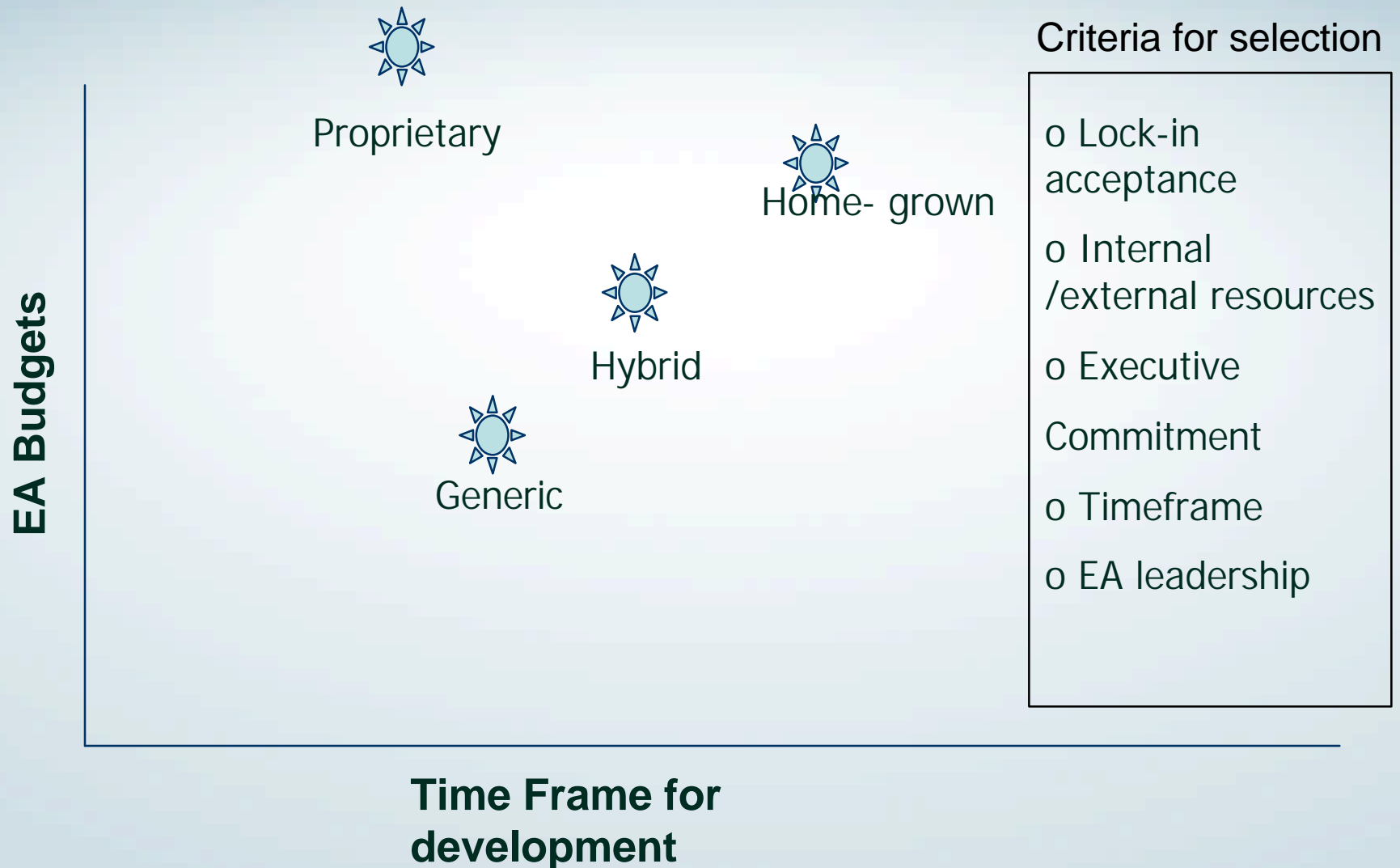
- Facilitate componentisation and assigning of ownership (to SME's)
- Disciplined change management

❖ To achieve higher productivity and reduce TCO

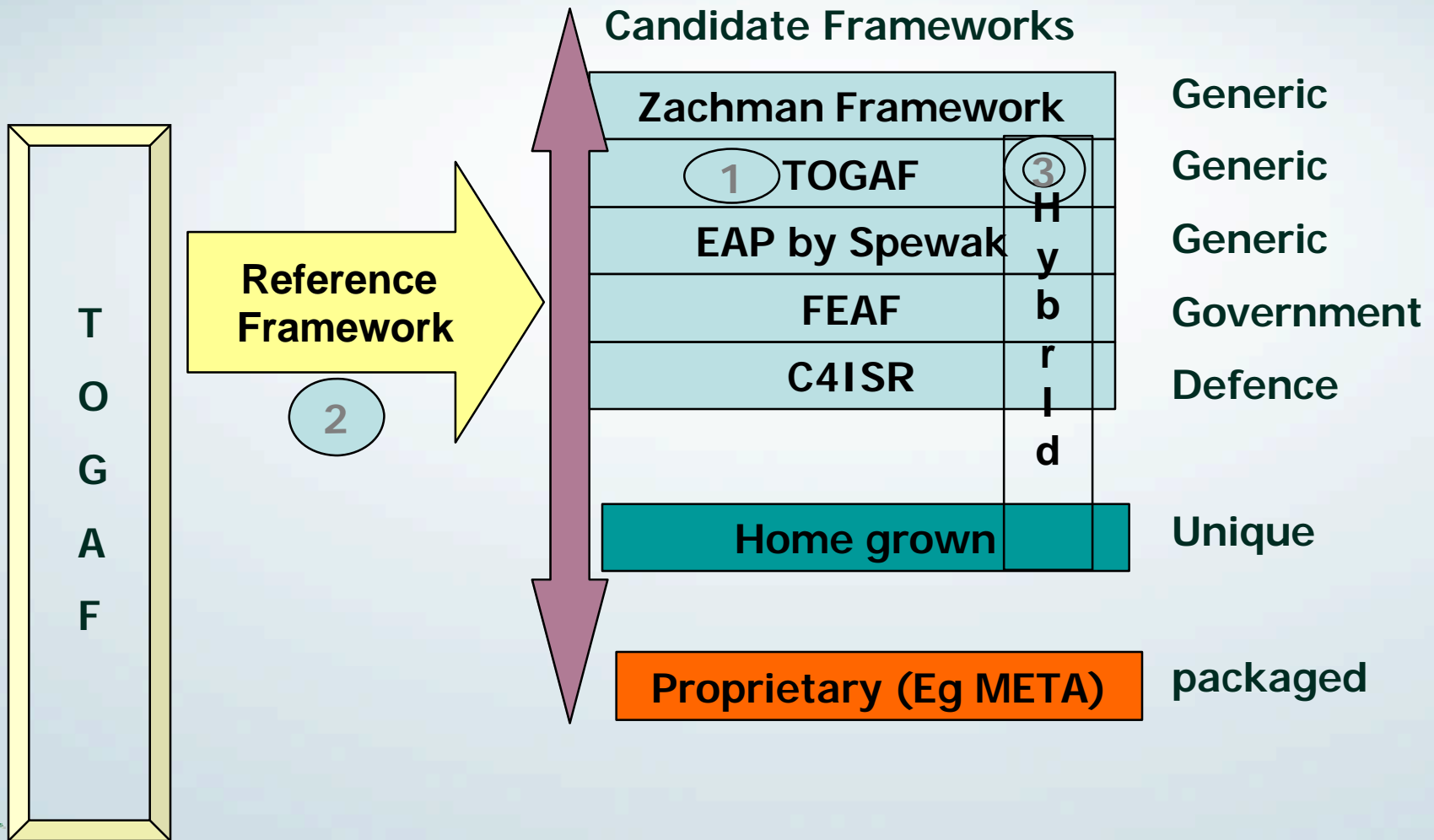
- Increase reuse across the enterprise
- Reduce learning curve



What are the choices for a Framework



Positioning of TOGAF



CCANDC SOLUTIONS CASE STUDY 1: WESTPAC BANKING CORPORATION (OPEN GROUP FORUM-BUYOUT MEMBER)

- **Background:**

- One of the four “banking pillars “ in Australia
- The oldest bank in Australia
- No of employees-27000
- Profit after tax 03 – A\$2.18 B

- **Motivations for EA**

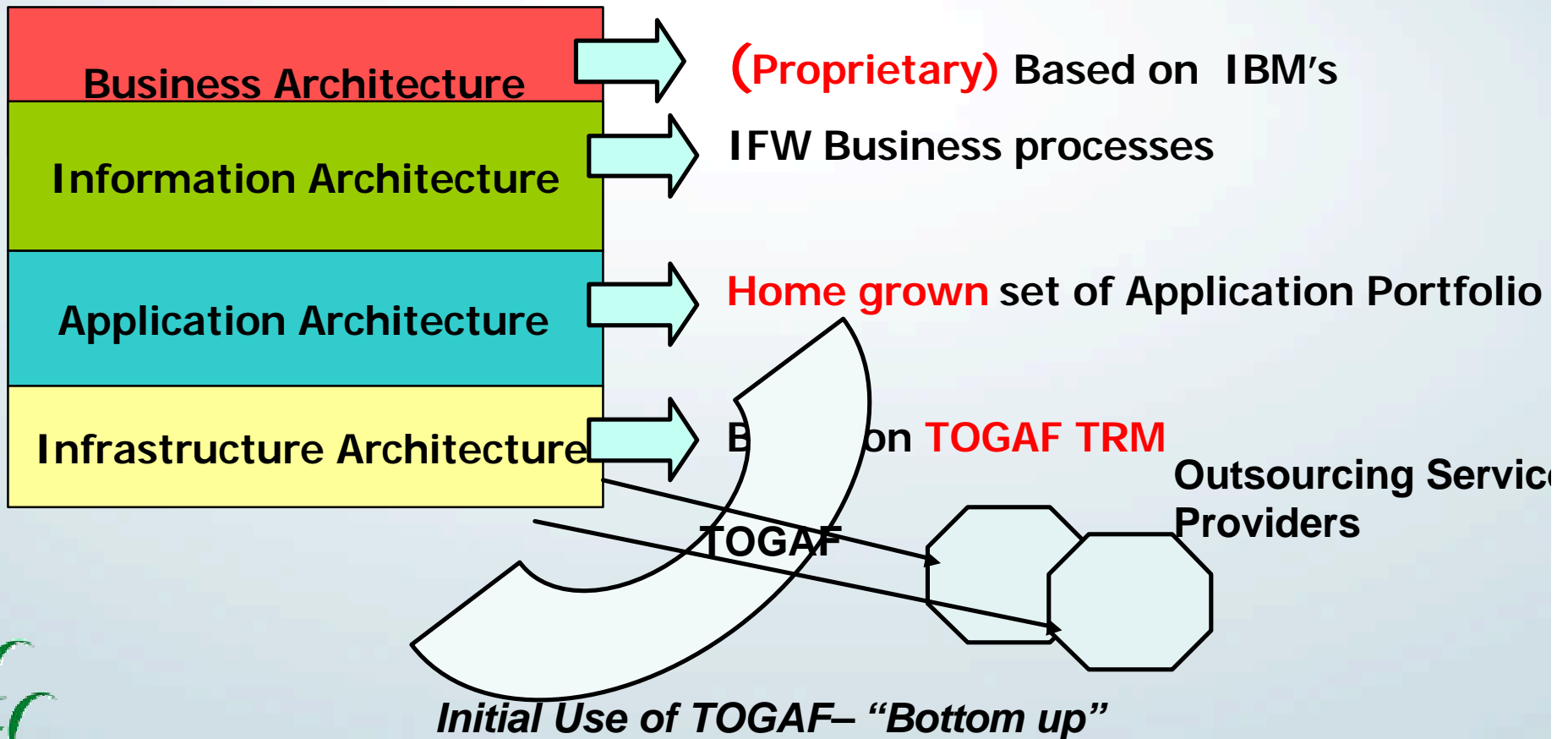
- Initially for communicating with outsourcing service providers
- Now an integral part of future business strategy

- **Approach for EA**

- Use TOGAF as the vendor-neutral framework for mapping current products and services portfolio
- Provide a set of TOGAF based standards for review , discussions and decisions
- Now moving towards “business process centric” model rather than a “Data centric” model



**CCANDC SOLUTIONS CASE STUDY 1:
WESTPAC BANKING CORPORATION
(OPEN GROUP FORUM-BUYOUT MEMBER)**



CCANDC SOLUTIONS CASE STUDY 2:

MONASH UNIVERSITY , MELBOURNE (OPEN GROUP MEMBER)

- **Background:**

- **University with several campuses in Australia and some overseas (Malaysia/South Africa)**
- **Disparate IT systems , A few central applications**

- **Motivations for EA:**

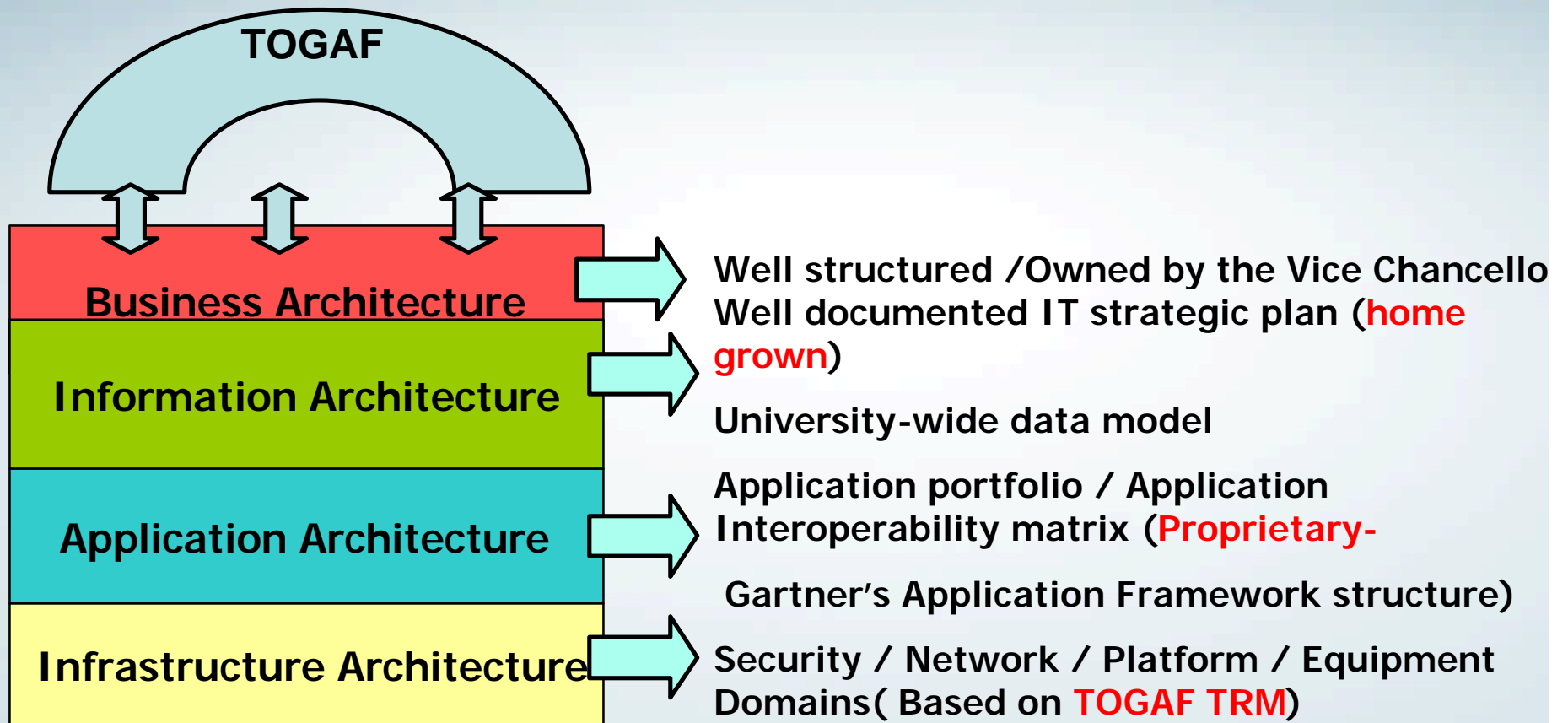
- **To simplify IT environment**
- **To reduce capital and operating costs**
- **To increase speed of implementation**
- **To increase reliability and availability**
- **To support increased level of innovation**

- **Approach for EA:**

- **Use TOGAF and other tools**
- **EA consistent with organisational structure**
- **Focus on priorities identified in IT Strategy**



**CCANDC SOLUTIONS CASE STUDY 2:
MONASH UNIVERSITY , MELBOURNE (OPEN GROUP MEMBER)**



Initial Use of TOGAF – “Top Down”



Commercial -in -confidence

CCANDC SOLUTIONS CASE STUDY 3: LARGEAUSTRALIAN WEALTH MANAGEMENT /INSURANCE ORGANISATION

- Background:

- Broad portfolio of financial services across Australia, New Zealand Europe and Asia
- Over 2.8 million customers
- Investment of over A\$84.5 billion
- 5400 employees
- 3300 financial advisers

- Motivations for EA:

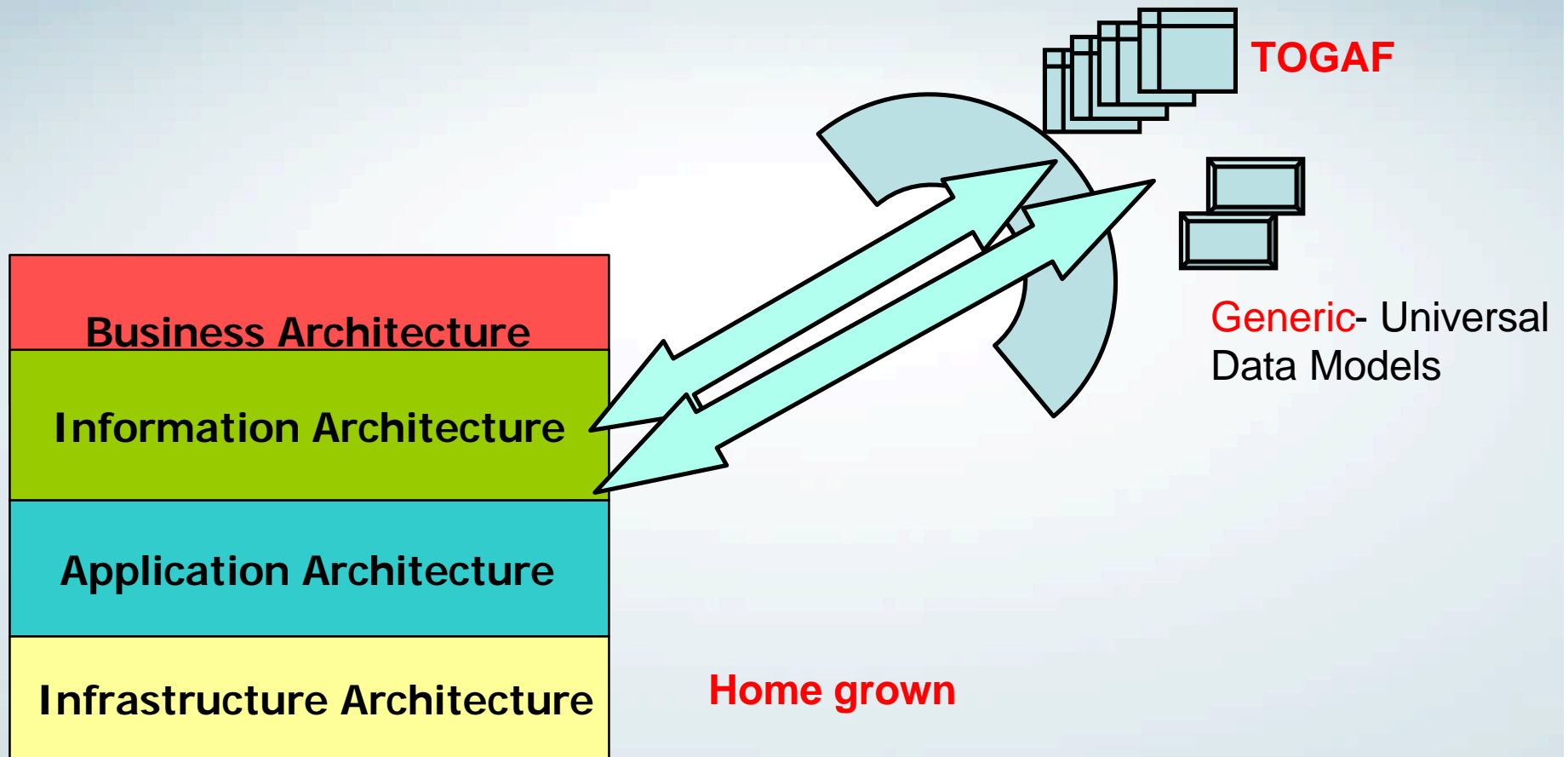
- To smooth technology variations across business units
- To ensure common standards
- To assess if the solutions are leveraging, contributing or duplicating
- To ensure documentation of the foundation (common) layers

- Approach to EA:

- Federated EA Model of "foundation" , "Common" and unique IT capabilities
- Clearly defined " Recharge" model for cost recovery
- Well structured Architecture Domain model with Enterprise and solution architects
- Hierarchy of well defined documents from IT strategy to IT inventory , IT standard and Buy lists



CCANDC SOLUTIONS CASE STUDY 3: LARGEAUSTRALIAN WEALTH MANAGEMENT /INSURANCE ORGANISATION



Initial Use of TOGAF – “Middle up”



Commercial -in -confidence

Glimpses of a few C C AND C Solutions architecture framework projects in Australasia

❖ Accident Compensation Corporation, New Zealand

- **Proprietary** Framework developed by outsourcing service provider
- Validation against **TOGAF**

❖ Canberra Local Government

- In-house outsourcing organisation servicing Government agencies
- Own **Home grown** service application architecture
- **TOGAF** TRM used as the basis for infrastructure architecture

❖ TabCorp (owner of Sydney Casino)

- Own **Home grown** Application Architecture
- **TOGAF** used as reference for EA principles
- **TOGAF** ADM used as the EA process methodology

❖ Malaysian Government (Potential)

- MDC has developed a **home grown** framework
- Needs validation against open standard (**TOGAF**)



It is rarely a green field for TOGAF.....

Most organisations have some architectural experience using proprietary, home grown or industry specific frameworks

Often times, it is a combination of:

logical and physical architectures

enterprise and solution architectures

TOGAF (or elements of it) need to fit in the larger Corporate EA framework

TOGAF consultants have to help salvage architectural artifacts from historical EA attempts

In most cases, the net result is a hybrid EA framework, “powered by TOGAF”

