



**Brazil**  
Technology & Innovation



11 de Novembro | 11:30

## Panorama atual da implementação da arquitetura OSDU, desafios e oportunidades.

**Juliana Fernandes Araújo**

Analista de Dados  IES Brazil  
Technology & Innovation

**BRASIL TALKS**  
CONFERÊNCIA 2022

**ARQUITETURA & PADRÕES ABERTOS**

SÃO PAULO **08-11 NOVEMBRO**

HYAT® THE  
*Open*  
GROUP

PATROCINADORES:



## Services

- Sales
- Marketing
- Support
- Consulting
- Training

## Technologies

- Mature Technologies
- High ROI
- Proven Results
- World Class
- In use at IOCs

## OSDU M13 RELEASE AND RECOGNITION

iesBrazil very proud with contributions to OSDU Consortium.



**Juliana Fernandes**  
Analista de Dados - iesBrazil



**Thiago Moreira**  
Analista de Dados - iesBrazil

Pre-shipping - BP, dgBes, iesBrazil, Cegal, Chevron, Equinor, HCL, Halliburton, InfoSys, INT, Katalyst, Schlumberger, Shell, Sword Group, WiPro

Andre Mosley, Ankit Goyal, Bert Kampes, Chad Leong, David Glass, Debasis Chatterjee, Farid Ibrahim, Grant Marblestone, Jill Rebecca, **Juliana Fernandes**, Kamlesh Todai, Michael Arneson, Naufal Noori, Per Helge Aarnes, Raman Singh, Samiullah Ghousudeen, Somnath Das, **Thiago Moreira**



August

Public release M13  
and recognition

November

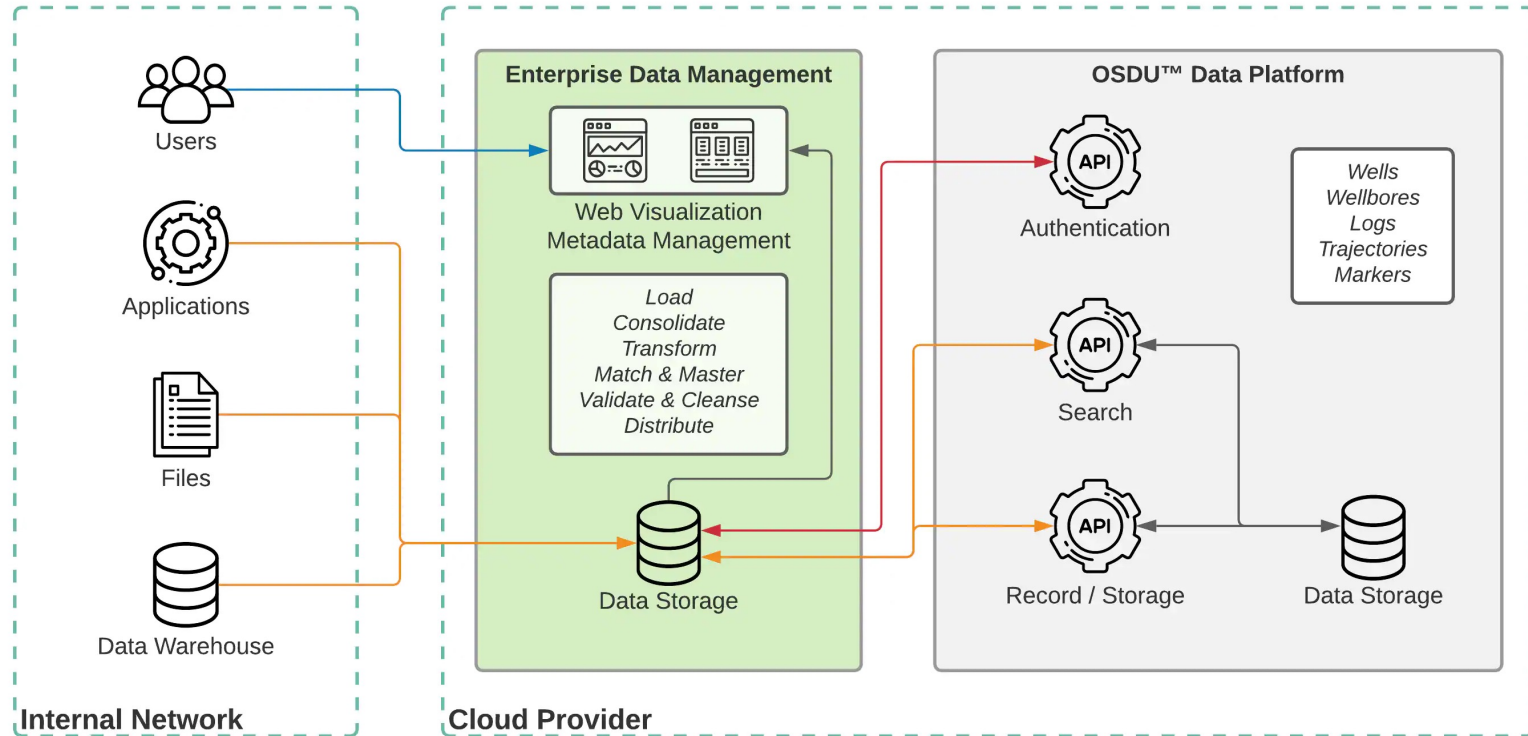
First well  
ingested by  
iesBrazil

April

Start Pre-Shipping Tests  
R3M11



Open



- Activity Plan
- Agreement
- Evaluation Plan
- Organization
- Basin
- Boundary Feature
- Geopolitical Entity
- Field
- Play
- Prospect
- Reservoir
- Risk

- BHARun
- Casing Design
- Coring
- Fluids Program
- Fluids Report
- Geometric Target Set
- Hole Section
- Isolated Interval
- Operations Report
- Perforation Interval
- Perforation Job
- Planned Cement Job

- Reference Level
- Rig
- Rock Sample
- Rock Volume
- Well
- Well Activity Program
- Well Barrier Element Test
- Wellbore Architecture
- Wellbore Opening
- Well Planning Well
- Well Planning Wellbore

- Seismic 2D Interpretation Set
- Seismic 3D Interpretation Set
- Seismic Acquisition Survey
- Seismic Processing Project
- Survey Program

LEGAL &  
COMMERCIAL  
DATA

CULTURAL DATA

RESERVOIR DATA

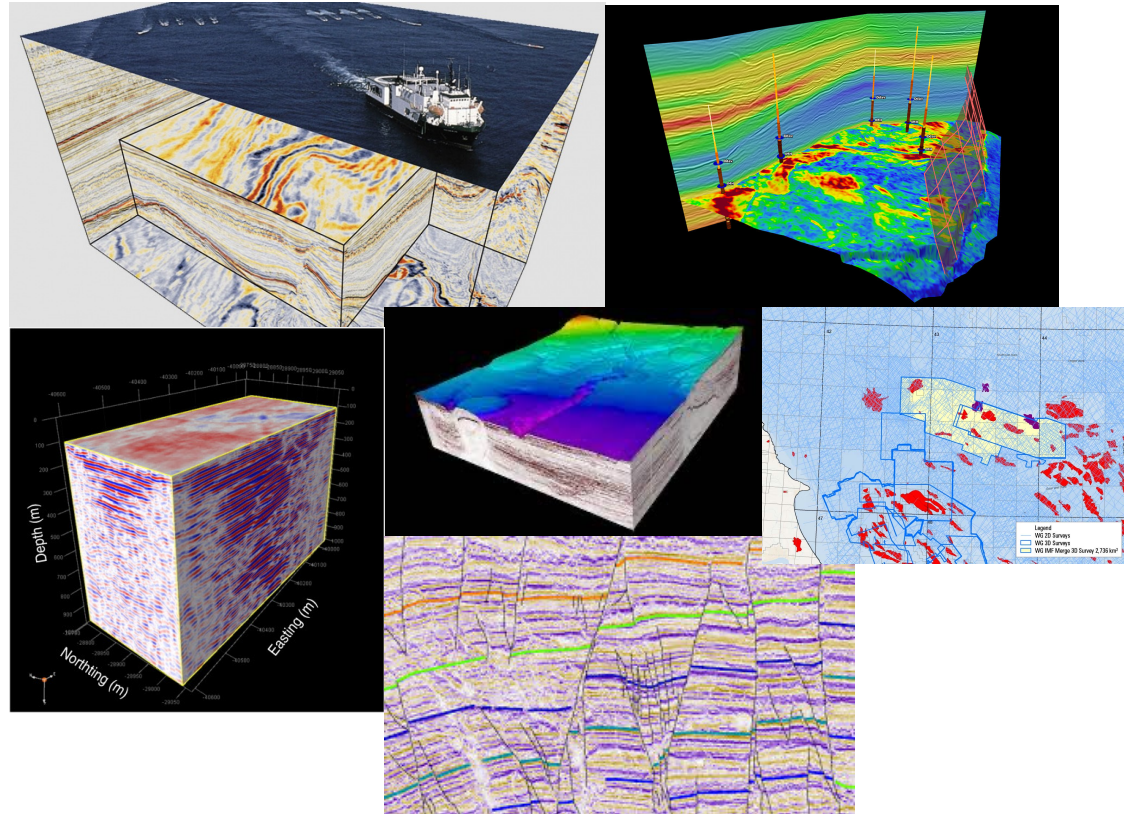
WELL AND WELLBORE DATA

SEISMIC DATA

- Earth ultrasound;
- 1<sup>st</sup> information in search of Oil and Gas;
- Seismic data is the largest digital collection of data in oil industry;
- 3D seismic revolutionized the use of seismic exponentially in the 1980s, and now data in Nodes and 4D causes an explosion in data volume;
- 20 Peta Bytes of seismic data in Brazil, growing exponentially every day.

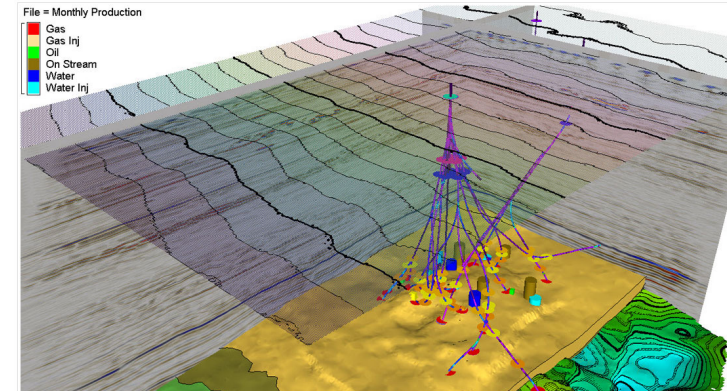
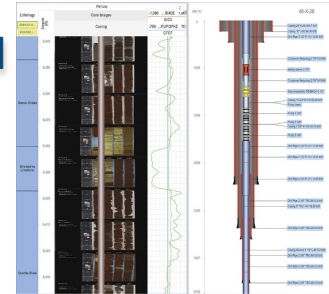


- Seismic Data SEGY
- Seismic Data VDS
- Seismic 2D Interpretation Set
- Seismic 3D Interpretation Set
- Seismic Acquisition Survey
- Seismic Processing Project
- Survey Program

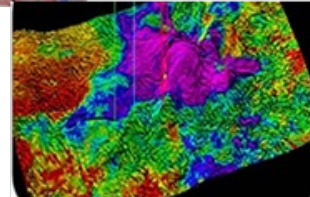
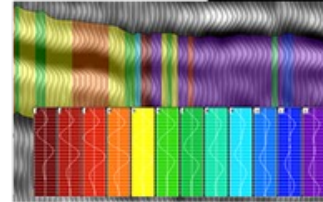
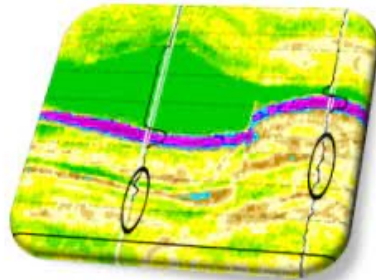
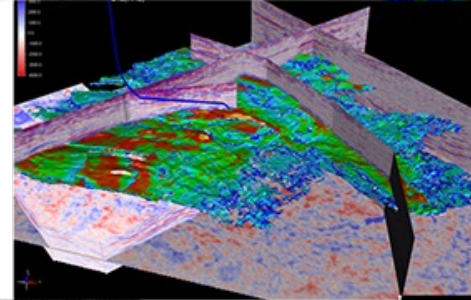
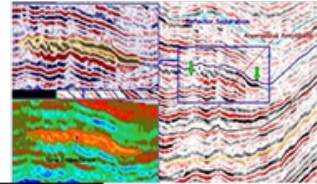
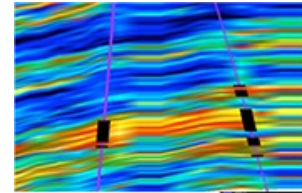
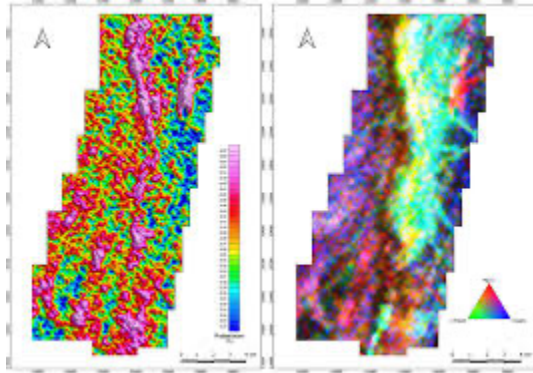


- Well drilling consolidates the actual information of an oil or gas reservoir;
- Data on wells are obtained in Exploration and Production;
- Several technologies, including Seismics, are used with the well to better understand the formations in subsurface;
- Massive collection available, around 1 PetaByte with a slow growth

- Well
- Well Activity Program
- Well Barrier Element Test
- Wellbore Architecture
- Wellbore Opening
- Well Planning Well
- Well Planning Wellbore
- Geometric Target Set
- Hole Section
- Isolated Interval
- Operations Report
- Perforation Interval
- Perforation Job
- Planned Cement Job
- Fluids Program
- Fluids Report
- Rock Sample
- Rock Volume
- Rig
- Reference Level
- Casing Design
- Coring
- BHARun



- Field
- Play
- Prospect
- Reservoir
- Risk





- ***DATA INGESTION***
- ***GOVERNANCE***
- ***ULTRA LARGE VOLUMES FLOW***
- ***AUTOMATION IN SCALE***
- ***USER INTERFACE***

## ***DATA INGESTION***

- Manual and slow process without automation;
- Input data are not standard among many data sources;
- Metadata extraction is an unique process for each data, on the real world the same algorithm may work for one dataset and not for another dataset, both from the same source;
- Need for a multidisciplinary team to retrieve the information for the metadata.

## **GOVERNANCE**

- OSDU is a mix of many open-source services and tools that requires a cross and multi knowledge of different technologies in that new domain;
- Technical team requires knowledge and skills on cloud service providers technologies such as: Apache AirFlow, NoSQL Databases, S3 Buckets, AWS Cognito, AWS CloudFormation, JSON Architecture, Kafka, Containers, Kubernetes, Route53, EC2, and others;
- Guarantee different layers of security and access: in data at rest, in data in motion, in authentication and in authorization.



## ***ULTRA LARGE VOLUMES***

- O&G industry handles a huge volume of data such as seismic files and needs a very strict strategy to store and access that data with a good performance;
- Compression - Cloud Costs;
- Transformation - Access Performance and Streaming;
- Petabytes of seismic data needs to flow into Oil&Gas technological projects sharing data and knowledge among partners to allow better economical decisions. Virtual Data Colaborative Room over the cloud.

## ***AUTOMATION AT SCALE***

- OSDU is a classic big data scenario and that imposes many challenges to scale automation processes such ingest data, for example;
- Each ingestion process and model is unique;
- Extreme Variety of data formats and models.

## ***USER INTERFACE***

Required interface for better productivity:

- Data Ingestion, Management & QC;
- Entitlements – User Admin & Access permissions;
- API Catalog.

- Integration among companies and sectors;
- Data sharing between owners;
- Eliminates physical barriers for data transfer;
- Adoption new technologies, streaming;
- Better data visibility;
- Fast conversion between industry standards;
- Standardized access for any tool to an indexed and organized data;
- Eliminate data silos between domains;

OSDU allows the developers to focus in enhancing and creating new functionalities on their architecture instead of spending many hours of coding to create methods and APIs to interact with the data. As a result, all functionalities are easily replicable between any OSDU instances. This allows O&G companies to invest more on algorithms and less in data management.

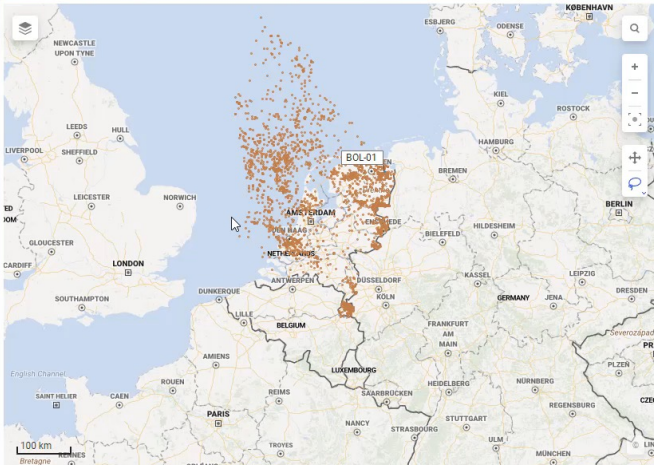
osdu\_r3m13\_AWS\_v1.0\_IESBRAZILdxp - TIBCO Spotfire

File Edit Data Visualizations View Tools Help User

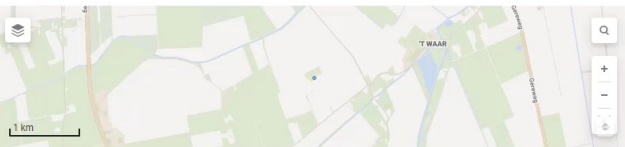
IES Brazil

## Open Subsurface Data Universe (OSDU)

- Zoom in/out on the map to set the boundaries of interest
- Click [here](#) to find all Wells in the map boundaries
- Lasso select groups of Wells on the map



Selected Wells



1 Selected Wells

1 Unique Wellbores

Selected Wells and their Wellbores

Well_Name	Longitude	Latitude	Well_ID	WellBore_ID
BOL-01	6,93	53,22	osdu.master.data-Well:1131	osdu.master.data-Wellbore:1131

- Click [here](#) to filter for specific Wells and then get their Trajectory, Marker, and Well Log files

Wellbores and their Datasets

Well_Name	WellBore_ID	Trajectory_ID	Marker_ID	WellLog_ID
BOL-01	osdu.master.data-Wellbore:1131	osdu.work-product.component-We...	osdu.work-product.component-	osdu.work-product.component-Well...

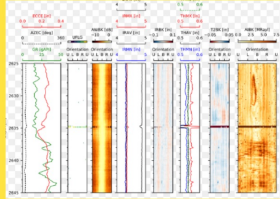
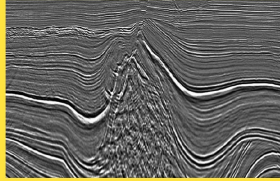
Type to search in list

- (All) T-values
- BOL-01

License & Copyrights | Visualize Wells | Volume Dashboard | Wells | +

4,949 of 4,949 rows | 1 marked | 4 columns | Well\_List\_In\_Boundary

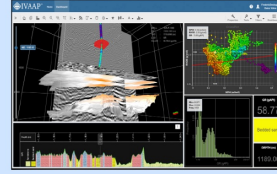
# DATA UNIVERSE



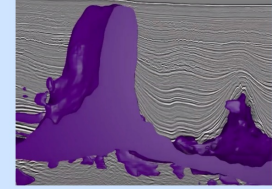
## DATA INGESTION



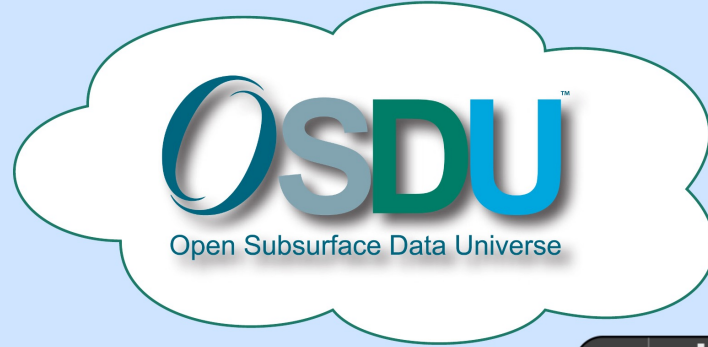
Analytics, Data Science



Data Management & Visualization



AI ML



## DATA CONSUMPTION

# THANK YOU!

Agnostic, customizable,  
open-source and cloud  
native data loading and  
visualization



Advanced AI algorithm  
for Seismic  
Interpretation, using  
VDS™ format with  
seismic streaming

Data Science and  
Analysis Environment,  
High Analytical Maturity,  
Corporate Governance,  
Data Consumption



Partnership with  
Amazon for deployment,  
support of OSDU  
instances and data  
ingestion





**Brazil**  
Technology & Innovation