



Passport - One Name, One Password

Chris Harding - The Open Group

Not a Microsoft Presentation

THE *Open* GROUP

- ❑ Derived from publicly available information
- ❑ Unbiased



What We Will Cover

THE *Open* GROUP

- ❑ The individual's point of view
- ❑ The organization's point of view
- ❑ Future direction
- ❑ Questions

The Individual's Point of View

THE *Open* GROUP



Benefits to the Individual

THE *Open* GROUP

- ❑ **Simpler identity management**
 - One name, one password
- ❑ Safer Internet environment for children
 - Kids Passport
- ❑ Simplified payment

My Passwords



AA Advantage

Adobe

Amazon

Amtrak

ATT GNS

BA Air Miles

barclays

BT

cj.harding

Cyberlink

Dabs

Demon

Demon POP3

DMTF

DSML

First Direct

IEEE Membership

Inland Revenue

Inmac

Insight

Intervideo

Jungle

Matrox

meta

mglweb

Microsoft

NameSecure.com

Natwest

Netcenter

Open Group

Open Group ftp

osr on open

Raindance

Real Server

salesforce

Shareview

tie_ftp

Verisign Challenge

X/Open Mail

xoweb

What I have Passwords For

THE *Open* GROUP

- ❑ The Open Group (7)
- ❑ Services used for work (3)
- ❑ Standards Bodies (3)
- ❑ Frequent Flyer Programs (2)
- ❑ On-line shopping (5)
- ❑ Banks (3)
- ❑ Product Support (4)
- ❑ Portals (2)
- ❑ ISPs (4)
- ❑ Utilities (1)
- ❑ Information Services (5)
- ❑ Government (1)

How Passport Works - Registration

THE *Open* GROUP

Sign up for
your *FREE*
.NET Passport
today!



How Passport Works - Registration

THE *Open* GROUP

e-mail address . . .
password . .
conditions ✓



How Passport Works - Registration

THE *Open* GROUP

Registration is
complete
Create your wallet . .



How Passport Works - Registration

THE *Open* GROUP



How Passport Works - Signing On

THE *Open* GROUP



How Passport Works - Signing On

THE *Open* GROUP

E-mail address <myaddress>

Password . .

Sign me in automatically . .

I'm using a public computer . .



How Passport Works - Signing On

THE *Open* GROUP



You are now signed in to Microsoft Passport.

For you to use Microsoft Passport on lastminute.com your next step is to log in to lastminute.com as well by selecting one of the options below.

You only have to do this once. Subsequently any time you visit lastminute.com if you sign in to Microsoft Passport you'll automatically be signed into lastminute.com as well.

How Passport Works - Signing On

THE *Open* GROUP

e-mail address . .
password . .



How Passport Works - Signing On

THE *Open* GROUP

logged in to
lastminute.com



How Passport Works - Signing On 2nd time

THE *Open* GROUP



How Passport Works - Signing On 2nd time

THE *Open* GROUP

E-mail address <myaddress>

Password . .

Sign me in automatically . .

I'm using a public computer . .



How Passport Works - Signing On 2nd time

THE *Open* GROUP

logged in to
lastminute.com



Passport Contents

THE *Open* GROUP

- E-mail address
- Name
- Country/Region
- State/Territory
- ZIP/Postal Code
- Time Zone
- Gender
- Birth Date
- Occupation
- Credit card information (in wallet)

Logon Information

THE *Open* GROUP

- ❑ Business may maintain separate user ids and map them to the Passport ids, or may use passport ids directly
- ❑ Business site redirects client to MS site for logo, or embeds MS logon fragment in its web page
- ❑ Password is held on MS site, doesn't go to business site
- ❑ Password is transmitted in encrypted form
- ❑ MS tells business result of password validation

Where can you use it?

THE *Open* GROUP

Now

- ❑ 35 Sign-in sites
- ❑ 69 Express Purchase sites
 - http://www.passport.com/directory/default.asp?PPIcid=1033?_cc=US&_lang=en

Future Additions

- ❑ 71 Sign-in sites
- ❑ About 150 Express Purchase sites

Will It Help Me?

THE *Open* GROUP

AA Advantage

Adobe

Amazon

Amtrak

ATT GNS

BA Air Miles

barclays

BT

cj.harding

Cyberlink

Dabs

Demon

Demon POP3

DMTF

DSML

First Direct

IEEE Membership

Inland Revenue

Inmac

Insight

Intervideo

Jungle

Matrox

meta

mglweb

Microsoft

NameSecure.com

Natwest

Netcenter

Open Group

Open Group ftp

osr on open

Raindance

Real Server

salesforce

Shareview

tie_ftp

Verisign Challenge

X/Open Mail

xoweb

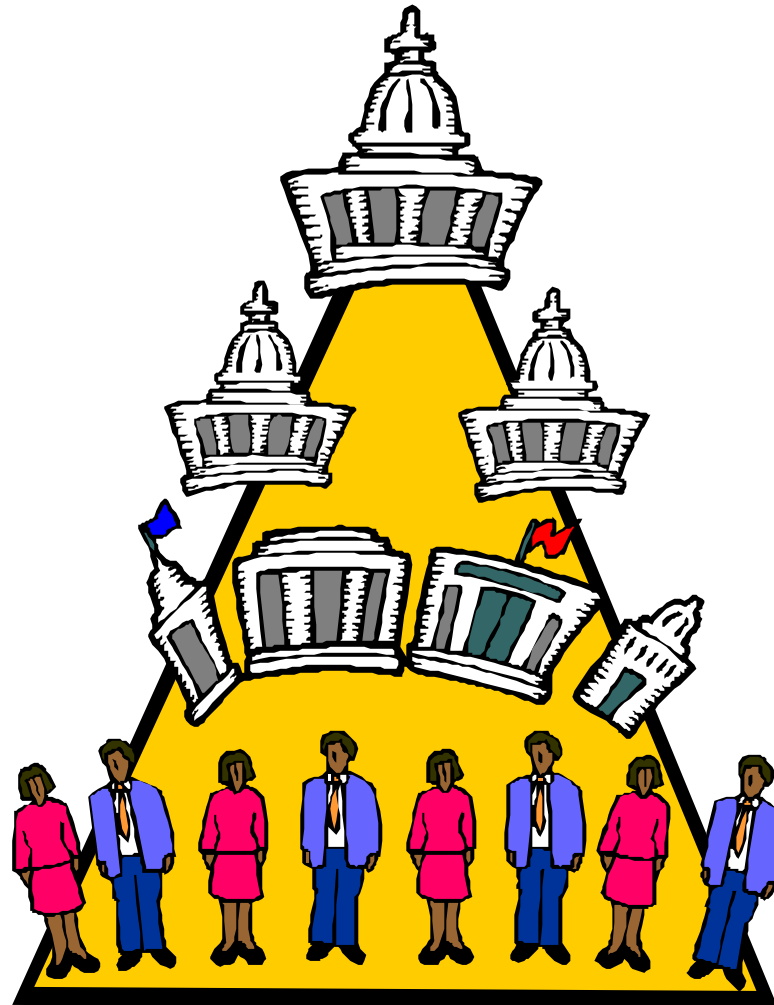
Might It Help Me, Potentially?

THE *Open* GROUP

- ? The Open Group (7)
- ? Services used for work (3)
- ✓ Standards Bodies (3)
- ✓ Frequent Flyer Programs (2)
- ✓ On-line shopping (5)
- ? Banks (3)
- ✓ Product Support (4)
- ✓ Portals (2)
- ? ISPs (4)
- ? Utilities (1)
- ✓ Information Services (5)
- ? Government (1)

The Organization's Point of View

THE *Open* GROUP



Benefits to the Business

THE *Open* GROUP

- ❑ Increase traffic by simplifying the sign-in and registration process.
- ❑ Improve customer retention by delivering personalized content based on core Passport profile data.
- ❑ Increase your sales by simplifying the purchase process.
- ❑ Offer easy, more secure sign-in and purchasing to millions of Passport members.

Becoming a Passport Site

THE *Open* GROUP

- ❑ Agree to comply with criteria
 - web page look and feel
 - customer privacy and security
- ❑ Implement website
 - non-trivial
 - SDKs for Microsoft Windows NT[®] 4.0, Microsoft Windows[®] 2000, and some UNIX[®] O/Ss
- ❑ Allow MS to test
- ❑ Receive site id

Future Directions



- .NET “My Services” applications platform
 - collection of XML Web services
 - invoked over the Internet by means of SOAP, XML, UDDI et al.
 - authenticates users
 - provides the ability to send alerts
 - stores personal information, including contacts, e-mail, calendar, profile, lists, electronic wallet, physical location, document stores, application settings, favorite Web sites, devices owned, and preferences for receiving alerts.

- Federated model for Internet authentication
 - allows different organizations to hold authentication data
 - including enterprises
 - based on Kerberos 5.0
 - proposed September 20 2001
 - proposed roll-out in 2002

Questions

- ❑ What is the trust model?
 - the individual trusts Microsoft
 - and the Passport sites - but how much?
 - the passport site trusts Microsoft
- ❑ How secure is it?
- ❑ How does it compare with PKI?
 - the private key is shared
- ❑ Will it reach critical mass?
- ❑ . . . ?

Passport - One Name, One Password

THE *Open* GROUP

Thank You!