

TELCERT Content Reengineering Tool (CRT)

How to create content packages from profiled schema

Introduction

This document illustrates how to create content packages from 'localised' schemas using CRT. These schemas are derived from original IMS content package specifications using IMS Application profile guidelines using the Telcert SchemaProf tool or a tool of similar capability. For details on how to profile specification using the popular SchemaProf tool, please refer to the SchemaProf tutorial.

In order to create content packages from profiled IMS specifications using Telcert tools, it is necessary to install the Telcert CRT on a computer with Java Virtual Machine (Java version 1.4 or later). Please refer to the CRT-Howto document accompanying the Telcert CRT distribution for more details.

Creating content package from localised schema

Step 1.

Create a new directory containing the localised schema (schema outputted by SchemaProf tool using Schema Transformer 'plugin'). Since Telcert CRT is a schema driven editor, it is essential that the schemas used are valid. Let us call this new directory *schemaFolder* in this document. Please copy all the 'included' and 'imported' schemas as well to this folder.

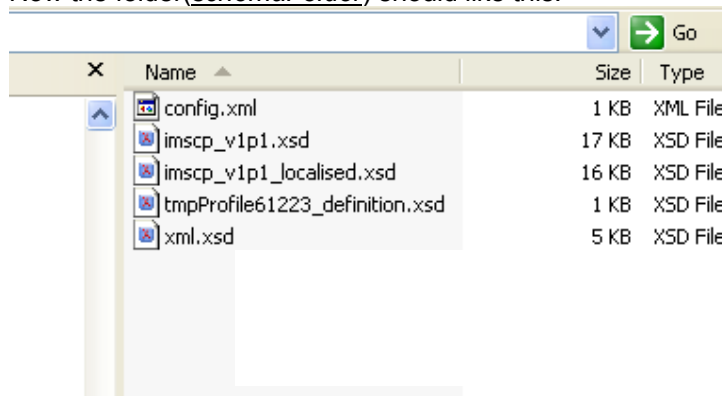
This *schemaFolder* directory can be anywhere in the file system of host machine.

Step 2.

Create a file called **config.xml** in this *schemaFolder*. This file will be used by CRT to identify the schema files that are to be used for controlling the content creation. Format for this file is as follows:

```
<?xml version="1.0" encoding="UTF-8"?>
<config>
<type>ContentPackage</type>
<cpSchema>imscp_v1p1p3_localised.xsd</cpSchema>
<!--optional - CRT will use default Metadata version if this not specified-->
<mdSchema>imsmd_v1p2p2.xsd</mdSchema>
<!-- File to be copied when creating content package - if none specified all
XSD files in this folder will be copied to content package root folder !! -->
<supportFile>ims_xml.xsd</supportFile>
<supportFile>imsmd_v1p2p2.xsd</supportFile>
<supportFile>imscp_v1p1p3_localised.xsd</supportFile>
</config>
```

Now the folder(*schemaFolder*) should like this:

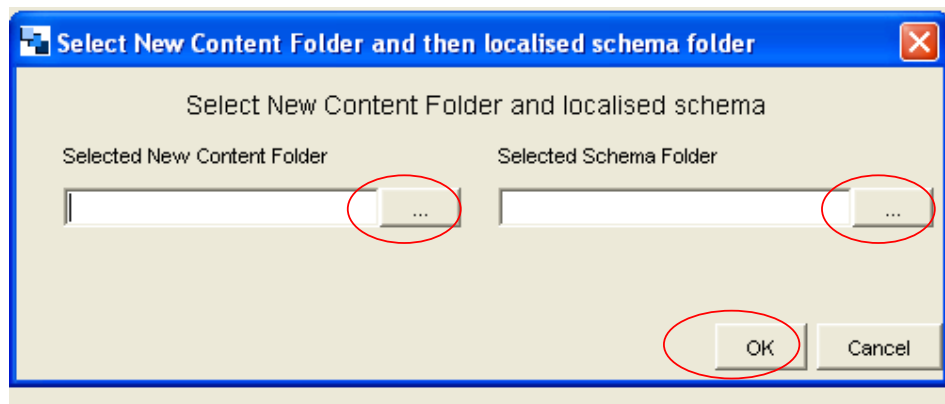


Step 3.

Start Telcert CRT as described in the Telcert CRT tutorial. From the menu options, select **File->New->Content from Localised Schema**.

A new dialog box requests for the content location and schema file location. Please click on the button next to 'Select New Content Folder' to a new directory where the new content package will be stored.

Similarly point the 'Selected schema folder' button to the folder containing the 'config.xml' file.

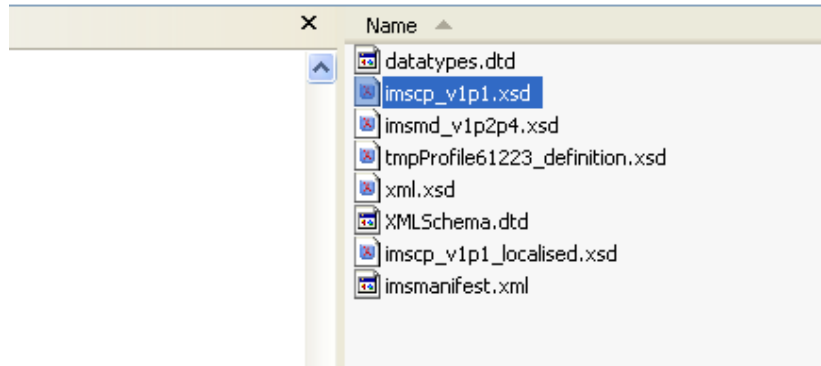


If Telcert CRT managed to load the schema files specified in the **config.xml** file successfully, then a new content package panel appears.

Step 4.

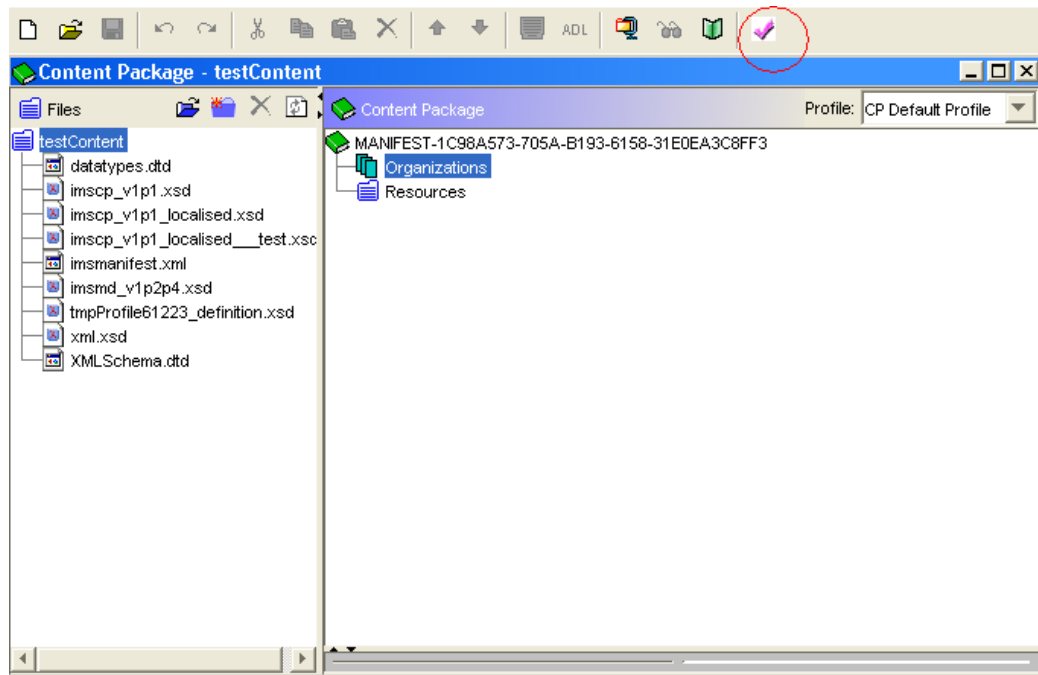
Content creation steps in Telcert CRT are exactly as detailed in the Reload tutorial (Section 3 of Reload Tutorial).

Before adding any resources or content, the new directory created for content package contain the following files:



Step 5.

In order to validate the content package, click on the pink arrow on the top menu bar (circled red in the following figure).



A dialog box with schema validation results appears. For a valid (based on schema based validation) manifest file, the following message appears:

